

Rockwell Solutions, Inc.

718 E Bridger Lane
Elk Ridge, UT 84651
(801) 361-2930

February 13, 2023

Mark Smith
Triple Stop Chevron
1034 West Gentile Street
Layton, Utah 84041

RE: Groundwater Monitoring Report, January 28-30, 2023
Triple Stop Chevron
1034 West Gentile Street, Layton, Utah 84041
Facility ID #3000500; Release NUB

Dear Mr. Smith:

Rockwell Solutions, Inc. completed groundwater monitoring activities for the above-referenced release on January 28-30, 2023. Groundwater samples were collected from thirty-two monitoring wells from the entire site's well network. The Calclean groundwater removal event that removed 238,730 gallons of groundwater in the neighborhood was concluded in June 2022. The air sparge system at the gas station was shut down on September 16, 2022.

Groundwater samples were collected using a disposable bailer, immediately placed on ice, and retained under chain-of-custody documentation. Samples were analyzed for MTBE, benzene, toluene, ethylbenzene, total xylenes, naphthalene (MBTEXN) and total petroleum hydrocarbons (TPH) - gasoline range organics (GRO) using EPA Method 8260B and TPH-diesel range organics (DRO) using EPA Method 8015B. The analytical report is attached.

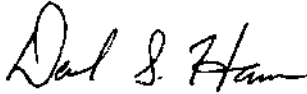
A summary of the historical groundwater monitoring data including groundwater elevation and laboratory analytical data is presented in Table 1. The groundwater contaminant plume appears to be stable with minor increases and decreases in individual wells. The only sample that exceeded a Tier 1 level was benzene in MW-44. Figures 1 and 2 are isoconcentration maps showing the areas of benzene and TPH-GRO contamination, respectively.

A groundwater elevation map is presented as Figure 3. Groundwater elevations increased an average of approximately 1.55 feet since October 2022. The apparent direction of groundwater flow across the site on January 28-30, was to the southwest.

The next round of groundwater monitoring is scheduled for April 2023. If you need additional information or have any questions, please contact me at (801) 361-2930.

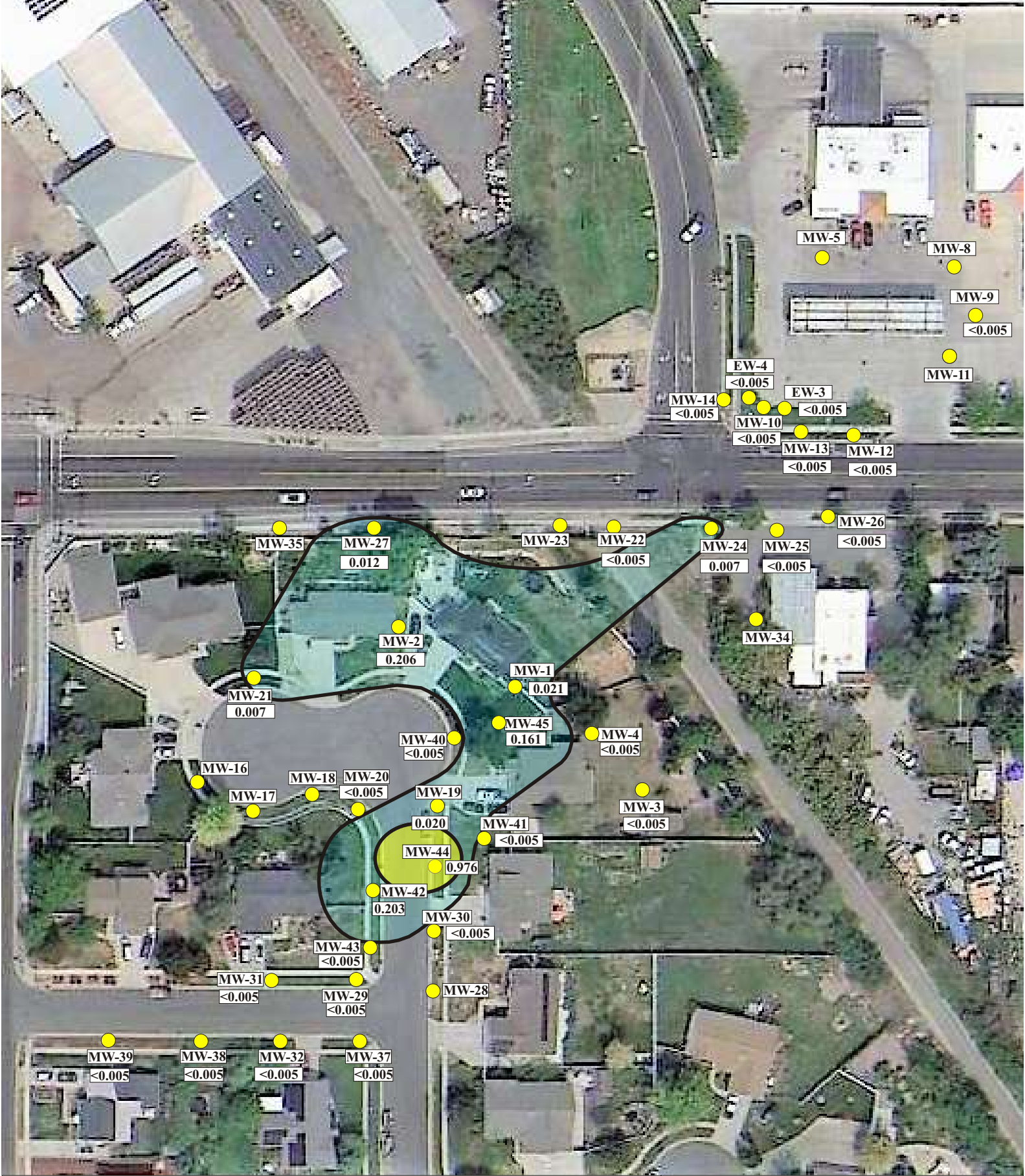
*Groundwater Monitoring Report, January 28-30, 2023
Triple Stop Chevron, Layton, UT., Facility ID #3000500*


Thank you,

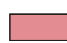


A handwritten signature in black ink that reads "David S. Hansen". The signature is written in a cursive style with a large initial 'D' and 'H'.

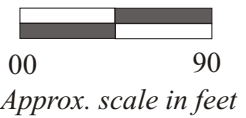
David S. Hansen
Certified UST Consultant CC0130
Rockwell Solutions, Inc.

cc: Kevin Beery, DERR



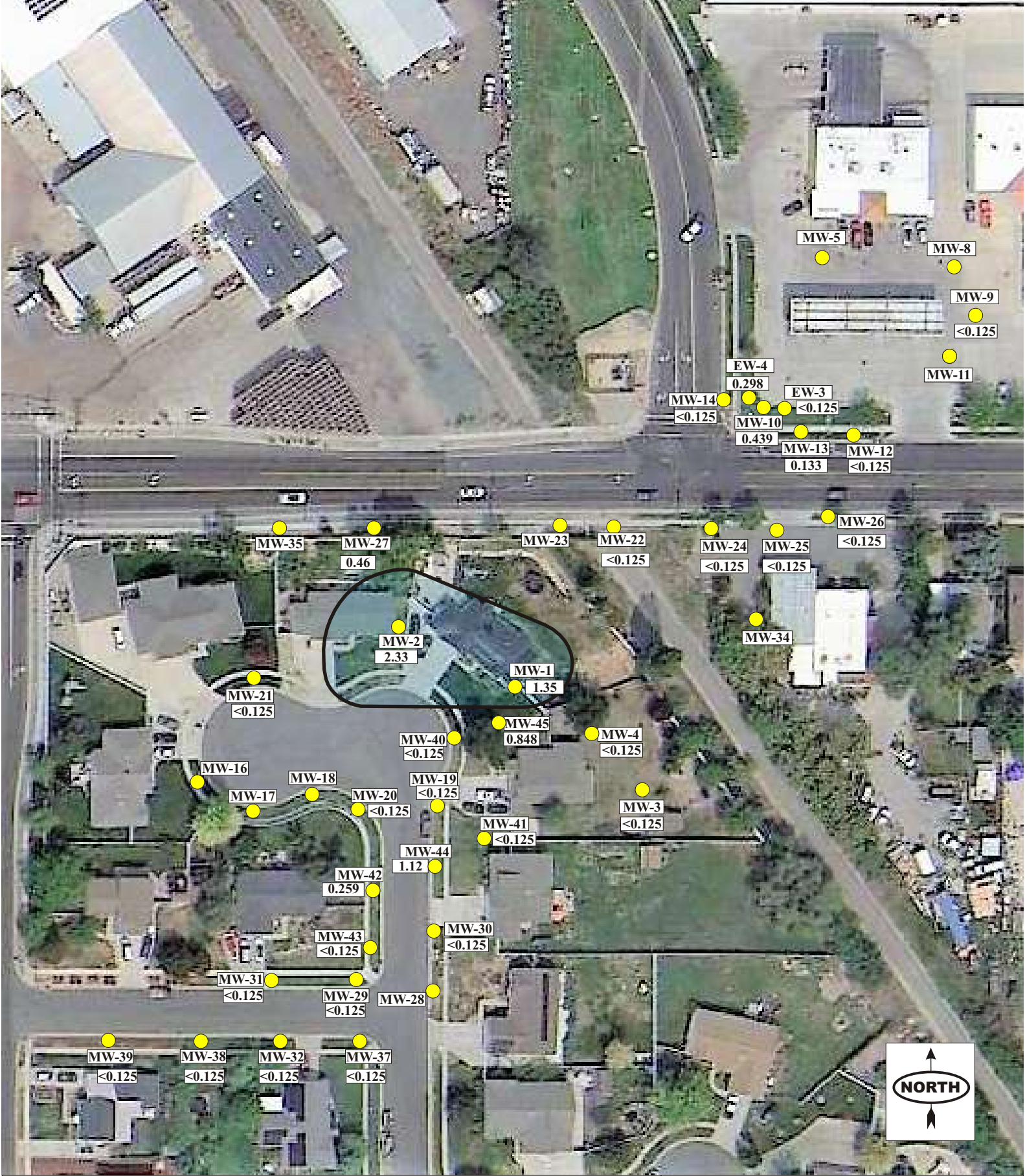
 Monitoring Well
0.189 Benzene (mg/L)

-  1.0 < 5.0
-  0.3 < 1.0
-  0.005 < 0.3



Triple Stop Chevron
1034 W Gentile Street
Layton, Utah

Figure 1 **Dissolved Benzene**
January 28-30, 2023



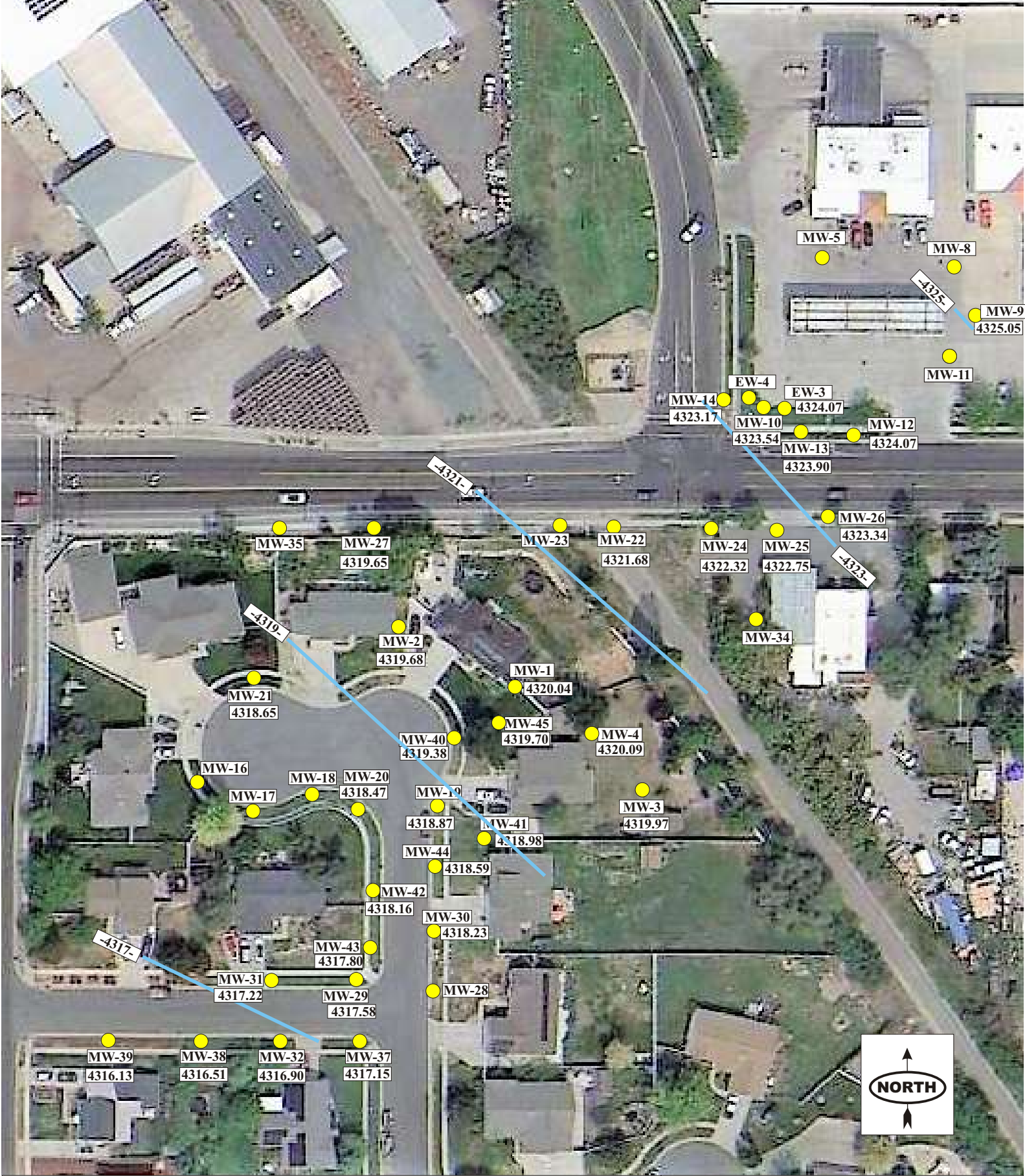
● Monitoring Well
 0.432 TPH (mg/L)

■ > 20
 ■ 10 < 20
 ■ 1.0 < 10

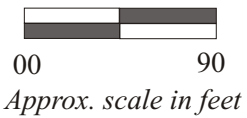
00 90
 Approx. scale in feet

Triple Stop Chevron
 1034 W Gentile Street
 Layton, Utah

Figure 2 Dissolved TPH
 January 28-30, 2023



● Monitoring Well
 (4317.59)= Groundwater Elevation (ft)
 — = Groundwater Elevation Contour (ft)



Triple Stop Chevron
1034 W Gentile Street
Layton, Utah
Figure 3 Groundwater Contours
 January 28-30, 2023

Table 1
Groundwater Analytical Results and Elevation Data
Triple Stop Chevron
1034 West Gentile Street, Layton, Utah
Release NUB; Facility ID 3000500

Sample ID/ TOC	DATE	TPH-DRO	TPH-GRO	BENZENE	ETHYL- BENZENE	MTBE	NAPH- THALENE	TOLUENE	XYLENES	FPT	DTW	Groundwater Elevation
	MM/DD/YY	(mg/L)	(mg/L)	(mg/L)	(mg/L)	(mg/L)	(mg/L)	(mg/L)	(mg/L)	(feet)	(feet)	(feet)
DERR ISL		1	1	0.005	0.7	0.2	0.7	1	10			
DERR Tier 1		10	10	0.30	4	0.2	0.7	3	10			
MW-1	02/26/19	1.3	17.6	10.60	1.28	<0.005	0.101	0.416	1.63	NM	NM	4319.73
4330.19	03/15/19	1.1	7.67	3.06	0.377	<0.005	0.037	0.595	1.41	0.00	9.77	4319.73
	09/04/19	1.06	18.00	6.70	0.551	<0.00100	0.0440	2.41	3.18	0.00	10.46	4319.73
	09/26/19	1.73	11.00	5.63	0.475	<0.100	<0.100	2.06	2.53	0.00	10.60	4319.59
	01/06/20	0.912	25.50	4.38	0.578	<0.100	0.0773	2.08	3.28	0.00	10.71	4319.48
	04/01/20	0.440	<100	1.08	0.167	<0.200	<1.00	0.337	0.688	0.00	10.45	4319.74
	10/29/20	0.737	15.10	3.59	0.484	<0.002	0.0385	2.040	2.110	0.00	11.20	4318.99
	01/27/21	1.10	13.1	2.84	0.565	<0.0250	0.0451	0.463	1.75	0.00	11.53	4318.66
	04/07/21	1.50	2.79	2.89	0.0644	<0.00500	0.00837	1.12	0.396	0.00	10.99	4319.20
	07/15/21	1.17	132	4.24	0.781	<0.200	<1.00	1.3	5.58	0.00	11.27	4318.92
	10/06/2021	0.784	7.68	1.86	0.386	<0.0250	0.073	0.253	2.27	0.00	11.46	4318.73
	1/12/2022	0.305	<12.5	0.244	0.207	<0.0250	<0.125	0.0362	0.686	0.00	10.67	4319.52
	4/27/2022	<1	1.64	0.322	0.131	<0.005	0.01	0.072	0.395	0.00	10.87	4319.32
	7/18/2022	2.3	1.100	0.213	0.136	<0.005	0.014	0.043	0.273	0.00	11.26	4318.93
	10/19/2022	1.6	0.438	0.053	0.026	<0.005	0.018	<0.012	<0.012	0.00	11.60	4318.59
	1/30/2023	1.0	1.35	0.030	0.145	<0.005	0.026	0.018	0.43	0.00	10.15	4320.04

Table 1
Groundwater Analytical Results and Elevation Data
Triple Stop Chevron
1034 West Gentile Street, Layton, Utah
Release NUB; Facility ID 3000500

Sample ID/ TOC	DATE	TPH-DRO	TPH-GRO	BENZENE	ETHYL- BENZENE	MTBE	NAPH- THALENE	TOLUENE	XYLENES	FPT	DTW	Groundwater Elevation
	MM/DD/YY	(mg/L)	(mg/L)	(mg/L)	(mg/L)	(mg/L)	(mg/L)	(mg/L)	(mg/L)	(feet)	(feet)	(feet)
DERR ISL		1	1	0.005	0.7	0.2	0.7	1	10			
DERR Tier 1		10	10	0.30	4	0.2	0.7	3	10			
MW-2	02/26/19	<1.0	6.95	4.74	<0.012	<0.005	0.053	<0.012	0.106	NM	NM	4319.91
4330.01	03/15/19	<1.0	2.4	1.24	0.03	<0.005	0.028	0.018	0.086	0.00	10.10	4319.91
	09/04/19	<0.100	0.430	0.02	0.00398	<0.00100	<0.00500	<0.00100	<0.00300	0.00	10.58	4319.43
	01/06/20	0.0807	1.760	0.33	0.0522	<0.00100	0.00473	0.000562	0.0182	0.00	10.92	4319.09
	04/01/20	0.383	4.480	0.76	0.132	<0.0100	0.0309	0.0134	0.6320	0.00	10.65	4319.36
	10/29/20	0.636	9.050	1.12	0.370	<0.001	0.0532	0.0226	1.2	0.00	11.28	4318.73
	01/27/21	0.139	2.92	0.282	0.115	<0.0100	<0.0500	0.3220	0.584	0.00	11.61	4318.40
	04/07/21	0.418	1.45	0.264	0.0441	<0.0100	<0.0500	0.0102	0.121	0.00	11.10	4318.91
	07/15/21	<0.100	0.575	0.00204	0.000733	<0.00100	<0.00500	<0.00100	0.000697	0.00	11.27	4318.74
	10/06/2021	0.403	7.67	0.527	0.307	<0.0100	0.0492	0.0519	2.32	0.00	11.49	4318.52
	1/12/2022	<0.100	<5.0	0.0777	0.108	<0.0100	<0.0500	0.0145	0.333	0.00	10.98	4319.03
	4/27/2022	<1	<0.125	0.01	0.02	<0.005	<0.012	<0.012	0.014	0.00	11.08	4318.93
	7/18/2022	<1	<0.125	0.008	0.008	<0.005	<0.012	<0.012	<0.012	0.00	11.27	4318.74
	10/19/2022	<1	0.363	0.212	0.021	<0.005	<0.012	0.015	0.115	0.00	11.59	12963.29
	1/30/2023	1.10	2.33	0.206	0.117	<0.005	0.0280	0.030	1.340	0.00	10.33	4319.68
MW-3*	03/15/19	<1.0	2.71	0.550	0.073	<0.005	<0.012	0.027	0.813	0.00	9.51	4319.78
MW-3	03/19/19	<1.0	<0.125	<0.005	<0.012	<0.005	<0.012	<0.012	<0.012	0.00	8.72	4320.57
4329.29	09/04/19	<0.100	0.327	<0.00100	<0.00100	<0.00100	<0.00100	<0.00100	<0.00100	0.00	9.74	4319.55
	01/06/20	<0.100	<0.500	<0.00100	<0.00100	<0.00100	<0.00100	<0.00100	<0.00100	0.00	9.84	4319.45
	04/01/20	<0.100	<0.500	0.00168	<0.00100	<0.00100	<0.00500	<0.00100	<0.00100	0.00	9.54	4319.75
	7/18/2022	<1.0	<0.125	<0.005	<0.012	<0.005	<0.012	<0.012	<0.012	0.00	10.57	4318.72
	10/19/2022	<1.0	<0.125	<0.005	<0.012	<0.005	<0.012	<0.012	<0.012	0.00	11.91	4317.38
	1/30/2023	<1.0	<0.125	<0.005	<0.012	<0.005	<0.012	<0.012	<0.012	0.00	9.32	4319.97

Table 1
Groundwater Analytical Results and Elevation Data
Triple Stop Chevron
1034 West Gentile Street, Layton, Utah
Release NUB; Facility ID 3000500

Sample ID/ TOC	DATE	TPH-DRO	TPH-GRO	BENZENE	ETHYL- BENZENE	MTBE	NAPH- THALENE	TOLUENE	XYLENES	FPT	DTW	Groundwater Elevation
	MM/DD/YY	(mg/L)	(mg/L)	(mg/L)	(mg/L)	(mg/L)	(mg/L)	(mg/L)	(mg/L)	(feet)	(feet)	(feet)
DERR ISL		1	1	0.005	0.7	0.2	0.7	1	10			
DERR Tier 1		10	10	0.30	4	0.2	0.7	3	10			
MW-4*	03/15/19	<1.0	<0.125	<0.005	<0.012	<0.005	<0.012	<0.012	<0.012	0.00	8.83	4321.22
MW-4	03/19/19	<1.0	1.23	0.2560	0.020	<0.005	<0.012	<0.012	0.302	0.00	9.40	4320.65
4330.05	09/04/19	<0.100	0.351	0.0050	<0.00100	<0.00100	<0.00100	<0.00100	<0.00100	0.00	10.35	4319.70
	01/06/20	<0.100	1.680	0.3350	0.00165	<0.00100	<0.00100	0.0149	0.0103	0.00	10.56	4319.49
	04/01/20	<0.100	0.259	0.09860	<0.00100	<0.00100	<0.00500	0.00319	<0.00300	0.00	10.22	4319.83
	10/29/20	<0.100	0.0598	0.0110	<0.00100	<0.00100	<0.00500	<0.00100	<0.00300	0.00	11.00	4319.05
	01/27/21	<0.100	<0.500	0.00222	<0.00100	<0.00100	<0.00500	<0.00100	<0.00300	0.00	11.37	4318.68
	04/07/21	0.0421	<0.500	0.0101	<0.00100	<0.00100	<0.00500	<0.00100	0.000772	0.00	10.80	4319.25
	07/15/21	<0.100	<0.500	0.00301	<0.00100	<0.00100	<0.00500	<0.00100	<0.00300	0.00	11.13	4318.92
	10/06/2021	<0.100	1	0.237	0.00154	<0.00100	<0.00500	0.00752	0.0413	0.00	11.32	4318.73
	1/11/2022	0.695	2.3	0.446	0.0118	<0.005	0.0145	0.00203	0.24	0.00	10.67	4319.38
	7/18/2022	<1	<0.125	0.013	<0.012	<0.005	<0.012	<0.012	<0.012	0.00	11.20	4318.85
	10/19/2022	<1	<0.125	0.013	<0.012	<0.005	<0.012	<0.012	<0.012	0.00	11.49	4318.56
	1/30/2023	<1.0	<0.125	<0.005	<0.012	<0.005	<0.012	<0.012	<0.012	0.00	9.96	4320.09
MW-5	03/15/19	<1.0	<0.125	<0.005	<0.012	<0.005	<0.012	<0.012	<0.012	0.00	8.65	4325.22
4333.87	01/13/22	<0.100	<0.5		<0.00100	<0.00100	<0.00500	<0.00100	<0.00300	0.00	10.93	4322.94
MW-6 4334.12	03/15/19	<1.0	<0.125	<0.005	<0.012	<0.005	<0.012	<0.012	<0.012	0.00	8.50	4325.62
MW-7 4333.96	03/15/19	<1.0	<0.125	<0.005	<0.012	<0.005	<0.012	<0.012	<0.012	0.00	8.51	4325.45

Table 1
Groundwater Analytical Results and Elevation Data
Triple Stop Chevron
1034 West Gentile Street, Layton, Utah
Release NUB; Facility ID 3000500

Sample ID/ TOC	DATE	TPH-DRO	TPH-GRO	BENZENE	ETHYL- BENZENE	MTBE	NAPH- THALENE	TOLUENE	XYLENES	FPT	DTW	Groundwater Elevation
	MM/DD/YY	(mg/L)	(mg/L)	(mg/L)	(mg/L)	(mg/L)	(mg/L)	(mg/L)	(mg/L)	(feet)	(feet)	(feet)
DERR ISL		1	1	0.005	0.7	0.2	0.7	1	10			
DERR Tier 1		10	10	0.30	4	0.2	0.7	3	10			
MW-8	03/15/19	<1.0	<0.125	<0.005	<0.012	<0.005	<0.012	<0.012	<0.012	0.00	9.07	4325.81
4334.88	09/04/19	<0.100	0.33	<0.00100	<0.00100	<0.00100	<0.00100	<0.00100	<0.00100	0.00	10.31	4324.57
	01/06/20	<0.100	<0.500	<0.00100	<0.00100	<0.00100	<0.00100	<0.00100	<0.00100	0.00	10.16	4324.72
	03/31/20	<0.100	<0.500	<0.00100	<0.00100	<0.00100	<0.00100	<0.00100	<0.00100	0.00	9.96	4324.92
	10/29/20	<0.0247	<0.100	<0.00100	<0.00100	<0.0001	0.00101	<0.00100	<0.00300	0.00	10.96	4323.92
	01/27/21	<0.100	<0.500	0.000136	<0.00100	<0.00100	<0.00500	<0.00100	<0.00300	0.00	11.04	4323.84
	04/08/21	<0.100	<0.500	<0.00100	<0.00100	<0.00100	<0.00500	<0.00100	<0.00300	0.00	10.49	4324.39
	07/13/21	<0.100	<0.500	<0.00100	<0.00100	<0.00100	<0.00500	<0.00100	<0.00300	0.00	10.90	4323.98
	10/07/2021	<0.100	<0.500	<0.00100	<0.00100	<0.00100	0.0171	<0.00100	<0.00300	0.00	11.26	4323.62
	1/13/2022	<0.100	<0.500	<0.00100	<0.00100	<0.00100	<0.00500	<0.00100	<0.00300	0.00	10.37	4324.51
MW-9	03/15/19	0.0379	<0.125	<0.005	<0.012	<0.005	<0.012	<0.012	<0.012	0.00	8.95	4325.62
4334.57	7/19/2022	<1	<0.125	<0.005	<0.012	<0.005	<0.012	<0.012	<0.012	0.00	11.00	4323.57
	10/18/2022	<1	<0.125	<0.005	<0.012	<0.005	<0.012	<0.012	<0.012	0.00	11.52	4323.05
	1/28/2023	<1	<0.125	<0.005	<0.012	<0.005	<0.012	<0.012	<0.012	0.00	9.52	4325.05
MW-10	03/12/19	13.2	33.1	9.32	1.12	<0.005	0.221	4.65	7.72	0.09	10.10	4324.43
4334.46	03/15/19	11.8	78.0	14.5	2.32	<0.005	0.394	25.1	18.1	0.00	10.00	4324.46
	03/20/19	13.3	68.7	13.8	2.13	<0.100	0.598	17.9	16.2	0.00	9.98	4324.48
	04/08/21	10.8	23.1	0.0662	0.119	<0.050	0.177	0.710	6.88	0.00	12.10	4322.36
	10/08/2021	1.68	10.8	0.0741	0.309	<0.0500	0.153	1.64	4.36	0.01	12.86	4321.61
	01/12/22	2.87	29	<0.05	0.571	<0.0500	0.174	0.802	9.83	0.01	12.01	4322.46
	6/10/2022	5.5	10.1	<0.005	<0.012	<0.005	0.033	0.107	3.34	0.00	NM	
	7/19/2022	<1.0	0.42	<0.005	<0.012	<0.005	<0.012	<0.012	0.152	0.00	12.42	4322.04
	10/18/2022	<1.0	0.29	<0.005	<0.012	<0.005	<0.012	<0.012	0.076	0.00	12.77	4321.69
	1/28/2023	1.6	0.439	<0.005	<0.012	<0.005	<0.012	<0.012	0.121	0.00	10.92	4323.54
MW-11	03/15/19	<1.0	<0.125	<0.005	<0.012	<0.005	<0.012	<0.012	<0.012	0.00	9.16	4325.53
4334.69	01/11/22	<0.100	<0.500	0.000125	<0.00100	<0.00100	<0.005	0.000429	0.000440	0.00	9.16	4325.53

Table 1
Groundwater Analytical Results and Elevation Data
Triple Stop Chevron
1034 West Gentile Street, Layton, Utah
Release NUB; Facility ID 3000500

Sample ID/ TOC	DATE	TPH-DRO	TPH-GRO	BENZENE	ETHYL- BENZENE	MTBE	NAPH- THALENE	TOLUENE	XYLENES	FPT	DTW	Groundwater Elevation
	MM/DD/YY	(mg/L)	(mg/L)	(mg/L)	(mg/L)	(mg/L)	(mg/L)	(mg/L)	(mg/L)	(feet)	(feet)	(feet)
DERR ISL		1	1	0.005	0.7	0.2	0.7	1	10			
DERR Tier 1		10	10	0.30	4	0.2	0.7	3	10			
MW-12	02/27/19	<1.0	4.54	0.32	0.019	<0.005	<0.012	0.125	0.069	NM	NM	--
4332.49	03/15/19	<1.0	4.92	0.1580	0.012	<0.005	<0.012	0.082	0.044	0.00	7.46	4325.03
	09/05/19	0.0562	2.11	0.0746	0.00274	<0.00100	<0.00500	0.00673	0.0107	0.00	10.57	4321.92
	01/08/20	<0.100	0.193	0.0076	<0.00100	<0.00100	<0.00500	<0.00100	0.00110	0.00	9.49	4323.00
	03/31/20	<0.100	0.159	0.0036	<0.00100	<0.00100	<0.00500	<0.00100	0.00172	0.00	9.23	4323.26
	7/19/2022	<1	<0.125	<0.005	<0.012	<0.005	<0.012	<0.012	<0.012	0.00	10.23	4322.26
	10/18/2022	<1	<0.125	<0.005	<0.012	<0.005	<0.012	<0.012	<0.012	0.00	10.59	4321.90
	1/28/2023	<1	<0.125	<0.005	<0.012	<0.005	<0.012	<0.012	<0.012	0.00	8.42	4324.07
MW-13	02/27/19	4.4	19.0	4.980	1.06	<0.200	<0.500	4.57	8.38	NM	NM	4324.82
4332.82	03/15/19	2.1	10.7	2.29	0.464	<0.005	0.039	1.27	3.06	0.00	8.00	4324.82
	03/20/18	2.9	17.0	3.020	0.635	<0.005	0.045	1.97	4.42	0.00	8.01	4324.81
	09/05/19	2.5	57.3	2.530	1.53	<0.00100	0.171	1.47	11.50	0.00	9.88	4322.94
	01/08/20	0.655	4.09	0.225	0.133	<0.100	0.0298	0.0127	0.756	0.00	10.02	4322.80
	03/31/20	1.270	4.38	0.402	0.220	<0.0100	0.0383	0.0317	1.340	0.00	9.78	4323.04
	10/29/20	0.762	4.19	0.532	0.191	<0.001	0.0688	0.0573	0.876	0.00	10.53	4322.29
	01/27/21	0.146	<0.500	0.00343	0.00280	<0.001	0.00195	<0.00100	0.00209	0.00	10.56	4322.26
	04/08/21	0.267	0.272	0.00200	0.00305	<0.00100	<0.00500	<0.00100	0.000462	0.00	10.12	4322.70
	07/13/21	1.6	8.52	0.00349	0.524	<0.00100	0.0881	0.091	3.88	0.00	10.39	4322.43
	10/08/2021	3.35	9.96	0.0144	0.771	<0.0500	0.146	0.214	4.03	0.00	10.81	4322.01
	1/12/2022	0.153	0.739	0.000456	0.0297	<0.001	0.00251	<0.00100	0.0122	0.00		
	7/19/2022	<1	<0.125	<0.005	<0.012	<0.005	<0.012	<0.012	<0.012	0.00	10.77	4322.05
	10/18/2022	<1	0.224	<0.005	<0.012	<0.005	<0.012	<0.012	0.029	0.00	10.93	4321.89
	1/28/2023	<1	0.133	<0.005	<0.012	<0.005	<0.012	<0.012	<0.012	0.00	8.92	4323.90

Table 1
Groundwater Analytical Results and Elevation Data
Triple Stop Chevron
1034 West Gentile Street, Layton, Utah
Release NUB; Facility ID 3000500

Sample ID/ TOC	DATE	TPH-DRO	TPH-GRO	BENZENE	ETHYL- BENZENE	MTBE	NAPH- THALENE	TOLUENE	XYLENES	FPT	DTW	Groundwater Elevation
	MM/DD/YY	(mg/L)	(mg/L)	(mg/L)	(mg/L)	(mg/L)	(mg/L)	(mg/L)	(mg/L)	(feet)	(feet)	(feet)
DERR ISL		1	1	0.005	0.7	0.2	0.7	1	10			
DERR Tier 1		10	10	0.30	4	0.2	0.7	3	10			
MW-14	02/27/19	3.3	13.5	2.090	0.511	<0.005	0.046	0.804	3.44	NM	NM	--
4332.86	03/15/19	2.5	9.21	1.16	0.365	<0.005	0.039	0.765	2.56	0.00	8.77	4324.09
	03/20/19	2.1	11.0	2.380	0.341	<0.005	0.034	1.44	2.43	0.00	8.77	4324.09
	09/05/19	0.415	6.3	0.798	0.082	<0.00100	0.0204	0.485	0.428	0.00	10.22	4322.64
	01/08/20	<0.100	1.02	0.018	0.00143	<0.00100	<0.00500	0.000857	0.00136	0.00	10.30	4322.56
	03/31/20	<0.100	0.811	0.032	0.00282	<0.00100	<0.00100	0.00119	0.00383	0.00	10.05	4322.81
	10/29/20	<0.247	0.375	0.000960	0.00019	<0.0001	<0.0050	<0.00100	0.00048	0.00	11.01	4321.85
	01/27/21	<0.100	<0.500	0.000308	<0.00100	<0.00100	<0.00500	<0.00100	<0.00300	0.00	11.25	4321.61
	04/08/21	0.0247	0.292	<0.00100	<0.00100	<0.00100	<0.00500	<0.00100	<0.00300	0.00	10.71	4322.15
	07/13/21	0.0601	0.596	<0.00100	<0.00100	<0.00100	0.00242	<0.00100	<0.00300	0.00	10.90	4321.96
	10/08/2021	<0.100	<0.500	0.000383	<0.00100	<0.00100	0.013	<0.00100	<0.00300	0.00	11.24	4321.62
	1/12/2022	<0.100	<0.500	0.000169	<0.00100	<0.00100	<0.00500	<0.00100	<0.00300	0.00		
	7/19/2022	<1	<0.125	<0.005	<0.012	<0.005	<0.012	<0.012	<0.012	0.00	11.16	4321.70
	10/18/2022	NS	NS	NS	NS	NS	NS	NS	NS		DRY	
	1/28/2023	<1	<0.125	<0.005	<0.012	<0.005	<0.012	<0.012	<0.012	0.00	9.69	4323.17
MW-15	02/27/19	<1.0	3.28	0.3180	<0.012	<0.005	<0.012	<0.012	0.0130	NM	NM	--
4333.42	03/15/19	<1.0	0.334	0.038	<0.012	<0.005	<0.012	<0.012	<0.012	0.00	9.43	4323.99
	09/05/19	<0.100	0.217	0.0018	<0.00100	<0.00100	<0.00500	<0.00100	<0.00300	0.00	10.56	4322.86
	01/08/20	<0.100	<0.500	<0.00100	<0.00100	<0.00100	<0.00500	<0.00100	<0.00300	0.00	10.60	4322.82
	03/31/20	<0.100	<0.500	<0.00100	<0.00100	<0.00100	<0.00500	<0.00100	<0.00300	0.00	10.37	4323.05
MW-16	03/15/19	<1.0	<0.125	<0.005	<0.012	<0.005	<0.012	<0.012	<0.012	0.00	10.10	4318.11
4328.21	09/04/19	<0.100	0.323	<0.00100	<0.00100	<0.00100	<0.00500	<0.00100	<0.00300	0.00	10.30	4317.91
	01/06/20	<0.100	<0.500	<0.00100	<0.00100	<0.00100	<0.00500	<0.00100	<0.00300	0.00	11.02	4317.19
	04/01/20	<0.100	<0.500	<0.00100	<0.00100	<0.00100	<0.00500	<0.00100	<0.00300	0.00	10.71	4317.50
	01/11/22	<0.100	<0.500	<0.00100	<0.00100	<0.00100	<0.00500	<0.00100	<0.00300	0.00	10.88	4317.33

**Table 1
Groundwater Analytical Results and Elevation Data
Triple Stop Chevron
1034 West Gentile Street, Layton, Utah
Release NUB; Facility ID 3000500**

Sample ID/ TOC	DATE	TPH-DRO	TPH-GRO	BENZENE	ETHYL- BENZENE	MTBE	NAPH- THALENE	TOLUENE	XYLENES	FPT	DTW	Groundwater Elevation
	MM/DD/YY	(mg/L)	(mg/L)	(mg/L)	(mg/L)	(mg/L)	(mg/L)	(mg/L)	(mg/L)	(feet)	(feet)	(feet)
DERR ISL		1	1	0.005	0.7	0.2	0.7	1	10			
DERR Tier 1		10	10	0.30	4	0.2	0.7	3	10			
MW-17 4327.91	03/15/19	<1.0	<0.125	<0.005	<0.012	<0.005	<0.012	<0.012	<0.012	0.00	9.62	4318.29
MW-18 4327.74	03/15/19	<1.0	<0.125	<0.005	<0.012	<0.005	<0.012	<0.012	<0.012	0.00	9.12	4318.62
	09/04/19	<0.100	0.324	<0.00100	<0.00100	<0.00100	<0.00500	<0.00100	<0.00300	0.00	9.45	4318.29
	01/06/20	<0.100	<0.500	0.00159	<0.00100	<0.00100	<0.00500	<0.00100	<0.00300	0.00	10.01	4317.73
	04/01/20	<0.100	<0.500	<0.00100	<0.00100	<0.00100	<0.00500	<0.00100	<0.00300	0.00	9.71	4318.03
	04/07/21	0.0531	0.150	0.0181	<0.00100	0.000169	<0.00100	<0.00100	0.00117	0.00	10.26	4317.48
	07/15/21	<0.100	<0.500	0.00731	<0.00100	<0.00100	<0.00500	<0.00100	<0.00300	0.00	10.26	4317.48
	10/06/2021	<0.100	<0.500	<0.00100	<0.00100	<0.00100	<0.00500	<0.00100	<0.00300	0.00	10.51	4317.23
	1/11/2022	<0.100	<0.500	<0.00100	<0.00100	<0.00100	<0.00500	<0.00100	<0.00300	0.00	10.00	4317.74
MW-19 4327.12	03/15/19	<1.0	6.29	4.23	0.423	<0.005	0.040	0.085	0.333	0.00	8.05	4319.07
	09/04/19	1.47	10.30	8.130	0.81	<0.00100	0.0548	0.0589	0.0589	0.00	8.46	4318.66
	09/27/19	1.68	12.50	9.700	0.746	<0.0400	0.0862	0.0464	1.51	0.00	8.61	4318.51
	01/07/20	0.198	4.56	2.140	0.0558	<0.00100	0.00401	0.00165	<0.00300	0.00	8.83	4318.29
	04/01/20	0.559	14.20	4.580	0.3720	<0.00500	<0.250	<0.0500	0.0569	0.00	8.59	4318.53
	10/29/20	0.371	5.59	1.190	0.2240	<0.005	<0.05	0.08530	0.517	0.00	9.23	4317.89
	01/27/21	0.313	1.47	0.340	0.156	<0.0100	<0.0500	0.00886	0.00742	0.00	9.66	4317.46
	04/07/21	2.04	36.4	3.98	0.998	<0.00500	0.0521	4.06	4.22	0.00	9.10	4318.02
	07/14/21	1.09	48.3	5.31	0.938	<0.0500	0.0731	0.526	3.18	0.00	9.24	4317.88
	10/06/2021	0.861	11.6	3.04	0.593	<0.0100	0.0762	0.319	1.5	0.00	9.48	4317.64
	1/12/2022	1.06	22.2	3.92	0.791	<0.025	0.0851	0.511	3.85	0.00		
	4/27/2022	1.7	8.3	1.84	0.541	<0.005	0.063	0.243	2.61	0.00	9.00	4318.12
	5/12/2022	<1.0	<0.125	<0.005	<0.012	<0.005	<0.012	<0.012	<0.012	0.00	NM	
	7/19/2022	1.7	0.67	0.097	0.03	<0.005	0.02	<0.012	0.162	0.00	9.22	4317.90
	10/19/2022	<1.0	0.568	0.106	0.06	<0.005	<0.012	<0.012	0.200	0.00	9.60	4317.52
	1/30/2023	<1.0	<0.125	0.02	<0.012	<0.005	<0.012	<0.012	<0.012	0.00	8.25	4318.87

Table 1
Groundwater Analytical Results and Elevation Data
Triple Stop Chevron
1034 West Gentile Street, Layton, Utah
Release NUB; Facility ID 3000500

Sample ID/ TOC	DATE	TPH-DRO	TPH-GRO	BENZENE	ETHYL- BENZENE	MTBE	NAPH- THALENE	TOLUENE	XYLENES	FPT	DTW	Groundwater Elevation
	MM/DD/YY	(mg/L)	(mg/L)	(mg/L)	(mg/L)	(mg/L)	(mg/L)	(mg/L)	(mg/L)	(feet)	(feet)	(feet)
DERR ISL		1	1	0.005	0.7	0.2	0.7	1	10			
DERR Tier 1		10	10	0.30	4	0.2	0.7	3	10			
MW-20	03/15/19	<1.0	<0.125	<0.005	<0.012	<0.005	<0.012	<0.012	<0.012	0.00	8.75	4318.61
4327.36	04/07/21	0.0686	3.36	1.43	0.0210	<0.0100	0.00222	0.0127	0.0169	0.00	9.72	4317.64
	07/14/21	0.268	15.9	1.82	0.161	<0.0200	0.0359	0.136	0.0888	0.00	9.76	4317.60
	10/06/2021	0.117	0.598	0.132	0.0868	<0.00100	0.00653	0.00223	0.00159	0.00	10.02	4317.34
	1/11/2022	<0.100	0.136	0.00188	0.000185	<0.00100	<0.005	<0.001	<0.003	0.00	9.49	4317.87
	4/27/2022	<1	<0.125	<0.005	<0.012	<0.005	<0.012	<0.012	<0.012	0.00	9.56	4317.80
	7/18/2022	<1	<0.125	<0.005	<0.012	<0.005	<0.012	<0.012	<0.012	0.00	9.75	4317.61
	10/19/2022	<1	<0.125	<0.005	<0.012	<0.005	<0.012	<0.012	<0.012	0.00	10.10	4317.26
	1/30/2023	<1	<0.125	<0.005	<0.012	<0.005	<0.012	<0.012	<0.012	0.00	8.89	4318.47
MW-21	03/15/19	<1.0	<0.125	<0.005	<0.012	<0.005	<0.012	<0.012	<0.012	0.00	9.55	4318.77
4328.32	09/04/19	<0.100	0.361	<0.00100	<0.00100	<0.00100	<0.00500	<0.00100	<0.00300	0.00	9.73	4318.59
	01/06/20	0.19	<0.500	0.00065	<0.00100	<0.00100	<0.00500	<0.00100	<0.00300	0.00	10.35	4317.97
	04/01/20	<0.100	<0.500	0.00756	<0.00100	<0.00100	<0.00500	<0.00100	<0.00300	0.00	10.09	4318.23
	7/18/2022	<1	<0.125	<0.005	<0.012	<0.005	<0.012	<0.012	<0.012	0.00	10.49	4317.83
	10/19/2022	<1	<0.125	<0.005	<0.012	<0.005	<0.012	<0.012	<0.012	0.00	10.47	4317.85
	1/30/2023	<1	<0.125	0.007	<0.012	<0.005	<0.012	<0.012	<0.012	0.00	9.67	4318.65

**Table 1
Groundwater Analytical Results and Elevation Data
Triple Stop Chevron
1034 West Gentile Street, Layton, Utah
Release NUB; Facility ID 3000500**

Sample ID/ TOC	DATE	TPH-DRO	TPH-GRO	BENZENE	ETHYL- BENZENE	MTBE	NAPH- THALENE	TOLUENE	XYLENES	FPT	DTW	Groundwater Elevation
	MM/DD/YY	(mg/L)	(mg/L)	(mg/L)	(mg/L)	(mg/L)	(mg/L)	(mg/L)	(mg/L)	(feet)	(feet)	(feet)
DERR ISL		1	1	0.005	0.7	0.2	0.7	1	10			
DERR Tier 1		10	10	0.30	4	0.2	0.7	3	10			
MW-22	02/27/19	6.7	41.4	6.32	2.12	<0.200	<0.500	10.4	16.9	NM	NM	--
4333.90	03/20/19	1.1	2.35	0.42	0.116	<0.005	0.016	0.182	0.665	0.00	11.60	4322.30
	09/04/19	1.08	7.40	0.25	0.180	<0.00100	0.0286	0.462	1.280	0.00	12.70	4321.20
	01/07/20	1.85	29.50	6.81	1.11	<0.00100	0.144	1.06	2.06	0.00	12.83	4321.07
	03/31/20	1.45	15.90	3.62	0.495	<0.100	<0.500	1.58	2.08	0.00	12.59	4321.31
	10/29/20	0.394	3.09	0.12	0.136	<0.0001	0.02	0.0212	0.366	0.00	13.29	4320.61
	04/08/21	0.664	0.997	0.00627	0.0408	<0.00100	0.00714	0.0212	0.134	0.00	13.08	4320.82
	07/16/21	0.207	1.46	0.00458	0.0328	<0.00100	0.00335	0.00405	0.0429	0.00	13.35	4320.55
	10/07/2021	0.0847	0.342	0.00327	0.00528	<0.00100	0.00205	0.00103	0.00749	0.00	13.58	4320.32
	1/13/2022	<0.1	<0.500	0.00138	0.00225	<0.00100	<0.500	0.000729	0.0064	0.00		4333.90
	4/27/2022	<1	0.52	<0.005	<0.012	<0.005	<0.012	<0.012	0.032	0.00	13.00	4320.90
	7/19/2022	<1	0.826	<0.005	0.044	<0.005	<0.012	<0.012	0.208	0.00	13.36	4320.54
	10/18/2022	<1	<0.125	<0.005	<0.012	<0.005	<0.012	<0.012	<0.012	0.00	13.74	4320.16
	1/28/2023	<1	<0.125	<0.005	<0.012	<0.005	<0.012	<0.012	<0.012	0.00	12.22	4321.68
MW-23	02/27/19	5.2	21.5	5.850	1.09	<0.005	<0.012	5.96	8.56	NM	NM	--
4333.67	03/20/19	<1.0	1.02	0.184	0.048	<0.005	<0.012	0.231	0.270	0.00	11.90	4321.77
	09/26/19	0.917	1.96	0.728	0.143	<0.00200	0.0668	0.417	0.382	0.00	11.92	4321.75
	01/08/20	0.311	6.26	1.180	0.188	<0.00100	<0.00100	0.0602	0.412	0.00	13.02	4320.65
	03/31/20	0.363	8.90	2.24	0.177	<0.0250	<0.125	0.971	0.538	0.00	12.75	4320.92
	10/29/20	<0.100	0.404	0.0151	0.0232	<0.0001	0.00374	0.00058	0.00752	0.00	13.36	4320.31
	01/28/21	<0.100	<0.500	0.000372	0.0014	<0.00100	<0.00500	<0.00100	0.000610	0.00	13.72	4319.95
	04/08/21	0.260	0.437	0.00889	0.0266	<0.00100	0.00190	0.000575	0.0450	0.00	13.23	4320.44
	07/16/21	0.453	15.7	0.0359	0.224	<0.0250	<0.125	<0.0250	0.565	0.00	13.45	4320.22
	10/07/2021	0.0533	0.116	0.00368	0.0272	<0.00100	0.00168	<0.00100	0.00234	0.00	13.69	4319.98
	1/13/2022	<0.100	0.282	0.000248	0.00302	<0.00100	<0.00500	<0.00100	0.00227	0.00		

Table 1
Groundwater Analytical Results and Elevation Data
Triple Stop Chevron
1034 West Gentile Street, Layton, Utah
Release NUB; Facility ID 3000500

Sample ID/ TOC	DATE	TPH-DRO	TPH-GRO	BENZENE	ETHYL- BENZENE	MTBE	NAPH- THALENE	TOLUENE	XYLENES	FPT	DTW	Groundwater Elevation
	MM/DD/YY	(mg/L)	(mg/L)	(mg/L)	(mg/L)	(mg/L)	(mg/L)	(mg/L)	(mg/L)	(feet)	(feet)	(feet)
DERR ISL		1	1	0.005	0.7	0.2	0.7	1	10			
DERR Tier 1		10	10	0.30	4	0.2	0.7	3	10			
MW-24	03/20/19	4.9	18.6	5.420	0.942	FALSE	0.132	0.233	7.11	0.00	9.98	4323.34
4333.32	09/04/19	0.0394	0.390	0.005	<0.00100	<0.00100	<0.00500	<0.00100	<0.00300	0.00	11.61	4321.71
	01/07/20	1.35	20.3	7.860	1.27	<0.00100	0.0705	0.0304	1.18	0.00	11.66	4321.66
	03/31/20	1.10	<12.5	0.853	0.258	<0.0250	0.0309	0.0161	0.754	0.00	11.42	4321.90
	10/29/20	2.6	36.6	4.320	0.506	<0.002	0.0942	0.32	5.660	0.00	12.22	4321.10
	02/04/21	4.2	19.6	2.940	0.717	<0.0250	0.120	0.241	4.28	0.00	12.35	4320.97
	04/08/21	5.96	7.15	0.374	0.0891	<0.0250	0.0379	0.0152	0.445	0.00	11.98	4321.34
	07/13/21	1.07	16.8	0.569	0.206	<0.0250	0.028	0.0533	0.708	0.00	12.22	4321.10
	10/7/2021	-	3.69	0.0438	0.548	<0.0250	0.0649	0.0212	1.70	0.00	12.51	4320.81
	1/13/2022	1.00	<12.5	0.0119	0.00654	<0.0250	<0.125	<0.0250	0.0696	0.00	12.51	4320.81
	7/19/2022	<1	0.162	<0.005	<0.012	<0.005	<0.012	<0.012	<0.012	0.00	12.28	4321.04
	10/18/2022	2.3	<0.125	<0.005	<0.012	<0.005	<0.012	<0.012	<0.012	0.00	12.72	4320.60
	1/28/2023	<1	<0.125	0.007	<0.012	<0.005	<0.012	<0.012	<0.012	0.00	11.00	4322.32

Table 1
Groundwater Analytical Results and Elevation Data
Triple Stop Chevron
1034 West Gentile Street, Layton, Utah
Release NUB; Facility ID 3000500

Sample ID/ TOC	DATE	TPH-DRO	TPH-GRO	BENZENE	ETHYL- BENZENE	MTBE	NAPH- THALENE	TOLUENE	XYLENES	FPT	DTW	Groundwater Elevation
	MM/DD/YY	(mg/L)	(mg/L)	(mg/L)	(mg/L)	(mg/L)	(mg/L)	(mg/L)	(mg/L)	(feet)	(feet)	(feet)
DERR ISL		1	1	0.005	0.7	0.2	0.7	1	10			
DERR Tier 1		10	10	0.30	4	0.2	0.7	3	10			
MW-25	03/20/19	1.5	5.53	1.25	0.298	<0.005	0.028	0.243	2.06	0.00	9.01	4323.90
4332.91	09/04/19	<0.100	0.351	0.000668	<0.00100	<0.00100	<0.00500	<0.00100	<0.00300	0.00	10.88	4322.03
	01/07/20	<0.100	<0.500	0.00182	<0.00100	<0.00100	<0.00500	<0.00100	<0.00300	0.00	10.94	4321.97
	03/31/20	<0.100	<0.500	0.00136	<0.00100	<0.00100	<0.00500	<0.00100	<0.00300	0.00	10.68	4322.23
	04/08/21	0.0501	<0.500	0.000130	0.00348	<0.00100	<0.00500	0.000415	0.00809	0.00	11.21	4321.70
	7/19/2022	<1	<0.125	<0.005	<0.012	<0.005	<0.012	<0.012	<0.012	0.00	11.49	4321.42
	10/18/2022	<1	<0.125	<0.005	<0.012	<0.005	<0.012	<0.012	<0.012	0.00	12.04	4320.87
	1/28/2023	<1	<0.125	<0.005	<0.012	<0.005	<0.012	<0.012	<0.012	0.00	10.16	4322.75
MW-26	03/19/19	<1.0	0.991	0.127	<0.012	<0.005	<0.012	0.012	0.033	0.00	8.31	4324.36
4332.67	7/19/2022	<1	<0.125	<0.005	<0.012	<0.005	<0.012	<0.012	<0.012	0.00	11.02	4321.65
	10/18/2022	<1	<0.125	<0.005	<0.012	<0.005	<0.012	<0.012	<0.012	0.00	11.47	4321.20
	1/28/2023	<1	<0.125	<0.005	<0.012	<0.005	<0.012	<0.012	<0.012	0.00	9.33	4323.34
MW-27	03/20/19	<1.0	1.44	0.2810	0.056	<0.005	<0.012	0.618	0.334	0.00	13.37	4319.95
4333.32	7/19/2022	1.3	4.72	0.2030	0.259	<0.005	0.029	1.010	2.050	0.00	14.25	4319.07
	10/18/2022	<1.0	0.55	<0.005	0.017	<0.005	<0.012	<0.012	0.288	0.00	14.58	4318.74
	1/28/2023	<1.0	0.46	0.012	0.060	<0.005	<0.012	0.058	0.184	0.00	13.67	4319.65
MW-28	03/20/19	<1.0	<0.125	<0.005	<0.012	<0.005	<0.012	<0.012	<0.012	NM	NM	--
MW-29	03/20/19	<1.0	<0.125	0.1200	<0.012	<0.005	<0.012	<0.012	<0.012	NM	NM	--
4326.35	4/27/2022	<1	<0.125	0.014	<0.012	<0.005	<0.012	<0.012	<0.012	NM	9.68	4316.67
	7/18/2022	<1	<0.125	<0.005	<0.012	<0.005	<0.012	<0.012	<0.012	NM	9.76	4316.59
	10/19/2022	<1	<0.125	<0.005	<0.012	<0.005	<0.012	<0.012	<0.012	NM	10.16	4316.19
	1/30/2023	<1	<0.125	<0.005	<0.012	<0.005	<0.012	<0.012	<0.012	0.00	8.77	4317.58

**Table 1
Groundwater Analytical Results and Elevation Data
Triple Stop Chevron
1034 West Gentile Street, Layton, Utah
Release NUB; Facility ID 3000500**

Sample ID/ TOC	DATE	TPH-DRO	TPH-GRO	BENZENE	ETHYL- BENZENE	MTBE	NAPH- THALENE	TOLUENE	XYLENES	FPT	DTW	Groundwater Elevation
	MM/DD/YY	(mg/L)	(mg/L)	(mg/L)	(mg/L)	(mg/L)	(mg/L)	(mg/L)	(mg/L)	(feet)	(feet)	(feet)
DERR ISL		1	1	0.005	0.7	0.2	0.7	1	10			
DERR Tier 1		10	10	0.30	4	0.2	0.7	3	10			
MW-30	03/20/19	<1.0	0.978	0.8200	0.076	<0.005	<0.012	0.014	0.068	NM		--
4326.86	09/04/19	0.0784	0.516	0.1390	0.0584	<0.00100	<0.0050	<0.00100	<0.00100	0.00	8.88	4317.98
	01/07/20	<0.100	<0.500	0.0098	<0.00100	<0.00100	<0.0050	<0.00100	<0.00300	0.00	9.28	4317.58
	04/01/20	<0.100	<0.500	0.00348	<0.00100	<0.00100	<0.0050	<0.00100	<0.00300	0.00	9.03	4317.83
	10/29/20	<0.0247	0.0932	0.02040	<0.00100	<0.0001	<0.0050	<0.00100	<0.00300	0.00	9.68	4317.18
	01/27/21	<0.100	<0.500	0.000131	<0.00100	<0.00100	<0.00500	<0.00100	0.003000	0.00	10.15	4316.71
	04/07/21	<0.100	<0.500	<0.00100	<0.00100	<0.00100	<0.00500	<0.00100	0.003000	0.00	9.62	4317.24
	07/15/21	0.0295	<0.500	<0.00100	<0.00100	<0.00100	<0.00500	<0.00100	<0.00300	0.00	9.71	4317.15
	10/06/2021	<0.100	<0.500	0.0253	<0.00100	<0.00100	<0.00500	<0.00100	<0.00300	0.00	9.93	4316.93
	1/12/2022	0.0406	2.74	0.938	0.0022	<0.00100	<0.00500	0.00249	0.0205	0.00		
	4/27/2022	<1	0.292	0.162	<0.012	<0.005	<0.012	<0.012	<0.012	0.00	9.51	4317.35
	5/12/2022	<1.0	<0.125	<0.005	<0.012	<0.005	<0.012	<0.012	<0.012	0.00	NM	
	7/18/2022	<1.0	<0.125	<0.005	<0.012	<0.005	<0.012	<0.012	<0.012	0.00	9.67	4317.19
	10/19/2022	<1.0	<0.125	0.063	<0.012	<0.005	<0.012	<0.012	<0.012	0.00	10.07	4316.79
	1/30/2023	<1	<0.125	<0.005	<0.012	<0.005	<0.012	<0.012	<0.012	0.00	8.63	4318.23

**Table 1
Groundwater Analytical Results and Elevation Data
Triple Stop Chevron
1034 West Gentile Street, Layton, Utah
Release NUB; Facility ID 3000500**

Sample ID/ TOC	DATE	TPH-DRO	TPH-GRO	BENZENE	ETHYL- BENZENE	MTBE	NAPH- THALENE	TOLUENE	XYLENES	FPT	DTW	Groundwater Elevation
	MM/DD/YY	(mg/L)	(mg/L)	(mg/L)	(mg/L)	(mg/L)	(mg/L)	(mg/L)	(mg/L)	(feet)	(feet)	(feet)
DERR ISL		1	1	0.005	0.7	0.2	0.7	1	10			
DERR Tier 1		10	10	0.30	4	0.2	0.7	3	10			
MW-31	03/27/19	<1.0	<0.125	<0.005	<0.012	<0.005	<0.012	<0.012	<0.012	0.00	8.36	4317.50
4325.86	09/04/19	<0.100	0.34	<0.00100	<0.00100	<0.00100	<0.00100	<0.00100	<0.00100	0.00	8.85	4317.01
	01/06/20	<0.100	<0.500	<0.00100	<0.00100	<0.00100	<0.00100	<0.00100	<0.00100	0.00	9.42	4316.44
	04/01/20	<0.100	0.134	0.0342	<0.00100	<0.00100	<0.00100	<0.00100	<0.00100	0.00	9.13	4316.73
	10/29/20	<0.02	0.385	0.3850	<0.00100	<0.0001	<0.00100	<0.00100	<0.00100	0.00	9.70	4316.16
	01/27/21	<0.100	0.836	0.2480	0.00355	<0.00100	<0.00500	<0.00100	0.000244	0.00	10.23	4315.63
	04/07/21	0.0609	1.030	0.3540	0.000428	0.000123	<0.00500	<0.00100	0.000794	0.00	9.74	4316.12
	07/14/21	0.0297	0.709	0.0260	0.00074	0.000248	<0.00500	<0.00100	0.00146	0.00	9.66	4316.20
	10/04/2021	<0.100	<0.500	0.00126	0.00148	0.000205	0.00195	<0.00100	0.000354	0.00	9.87	4315.99
	1/11/2022	<0.100	0.757	0.432	<0.00100	<0.00100	<0.00500	<0.00100	0.000605	0.00	9.38	4316.48
	4/27/2022	<1	3.68	2.77	0.234	<0.005	<0.012	0.036	0.000605	0.00	9.63	4316.23
	5/12/2022	<1.0	<0.125	<0.005	<0.012	<0.005	<0.012	<0.012	<0.012	0.00	NM	
	7/19/2022	<1.0	0.33	<0.005	<0.012	<0.005	<0.012	<0.012	<0.012	0.00	9.55	4316.31
	10/19/2022	<1.0	<0.125	<0.005	<0.012	<0.005	<0.012	<0.012	<0.012	0.00	9.98	4315.88
	1/28/2023	<1	<0.125	<0.005	<0.012	<0.005	<0.012	<0.012	<0.012	0.00	8.64	4317.22
MW-32	03/27/19	<1.0	<0.125	<0.005	<0.012	<0.005	<0.012	<0.012	<0.012	0.00	8.74	4317.15
4325.89	01/27/21	<0.100	<0.500	<0.00100	<0.00100	<0.00100	<0.00500	<0.00100	<0.00300	0.00	10.61	4315.28
	04/07/21	0.0383	<0.500	0.00011	<0.00100	<0.00100	<0.00500	<0.00100	<0.00300	0.00	10.15	4315.74
	07/14/21	<0.100	<0.500	<0.00100	<0.00100	0.000175	<0.00500	<0.00100	0.00037	0.00	10.04	4315.85
	10/04/2021	<0.100	<0.500	<0.00100	<0.00100	0.000194	<0.00500	<0.00100	<0.00300	0.00	10.23	4315.66
	1/11/2022	<0.100	<0.500	<0.00100	<0.00100	<0.00100	<0.00500	<0.00100	<0.00300	0.00	9.79	4316.10
	4/27/2022	<1	<0.125	0.007	<0.012	<0.005	<0.012	<0.012	<0.012	0.00	10.01	4315.88
	7/18/2022	<1	<0.125	0.075	<0.012	<0.005	<0.012	<0.012	<0.012	0.00	9.93	4315.96
	10/18/2022	<1	<0.125	0.038	<0.012	<0.005	<0.012	<0.012	<0.012	0.00	10.35	4315.54
	1/30/2023	<1	<0.125	<0.005	<0.012	<0.005	<0.012	<0.012	<0.012	0.00	8.99	4316.90

Table 1
Groundwater Analytical Results and Elevation Data
Triple Stop Chevron
1034 West Gentile Street, Layton, Utah
Release NUB; Facility ID 3000500

Sample ID/ TOC	DATE	TPH-DRO	TPH-GRO	BENZENE	ETHYL- BENZENE	MTBE	NAPH- THALENE	TOLUENE	XYLENES	FPT	DTW	Groundwater Elevation
	MM/DD/YY	(mg/L)	(mg/L)	(mg/L)	(mg/L)	(mg/L)	(mg/L)	(mg/L)	(mg/L)	(feet)	(feet)	(feet)
DERR ISL		1	1	0.005	0.7	0.2	0.7	1	10			
DERR Tier 1		10	10	0.30	4	0.2	0.7	3	10			
MW-33 4332.19	03/27/19	<1.0	<0.125	<0.005	<0.012	<0.005	<0.012	<0.012	<0.012	0.00	8.06	4324.93
MW-34	03/27/19	<1.0	<0.125	<0.005	<0.012	<0.005	<0.012	<0.012	<0.012	NM	NM	-
4331.78	09/04/19	<0.100	0.336	0.00253	<0.00100	<0.00100	<0.00500	<0.00100	<0.00300	0.00	10.48	4321.30
	01/07/20	<0.100	<0.500	<0.00100	<0.00100	<0.00100	<0.00500	<0.00100	<0.00300	0.00	10.45	4321.33
	03/31/20	<0.100	<0.500	<0.00100	<0.00100	<0.00100	<0.00500	<0.00100	<0.00300	0.00	10.19	4321.59
	01/13/22	<0.100	<0.500	<0.00100	<0.00100	<0.00100	<0.00500	0.000353	0.000458	0.00		4331.78
MW-35	04/02/19	<1.0	1.84	0.9270	<0.012	<0.005	0.017	0.078	0.258	NM	NM	--
4332.19	09/04/19	0.262	5.81	1.5200	0.0931	<0.00100	0.0121	0.140	0.558	0.00	13.37	4318.82
	01/08/20	0.161	4.70	1.0600	0.0735	<0.00100	0.0255	0.199	0.203	0.00	13.72	4318.47
	03/31/20	0.0710	0.62	0.0789	0.0292	<0.00100	0.0125	0.00267	0.0673	0.00	13.44	4318.75
	07/16/21	<0.100	<0.500	0.0000966	<0.00100	<0.00100	<0.00500	<0.00100	<0.00300	0.00		4332.19
	10/07/2021	<0.100	<0.500	0.000434	0.00117	<0.00100	0.00385	<0.00100	0.000651	0.00	14.00	4318.19
	1/13/2022	<0.100	0.21	0.00215	0.0115	<0.00100	0.00713	0.000904	0.0815	0.00		4332.19
MW-36	04/02/19	<1.0	<0.125	0.026	<0.012	<0.005	<0.012	<0.012	<0.012	NM	NM	-
4333.26	09/04/19	<0.100	1.31	0.193	<0.00100	<0.00100	<0.00500	<0.00100	0.00352	0.00	11.60	4321.66
	01/07/20	<0.100	<0.500	<0.00100	<0.00100	<0.00100	<0.00500	<0.00100	<0.00300	0.00	11.74	4321.52
	03/31/20	<0.100	<0.500	<0.00100	<0.00100	<0.00100	<0.00500	<0.00100	<0.00300	0.00	11.50	4321.76

Table 1
Groundwater Analytical Results and Elevation Data
Triple Stop Chevron
1034 West Gentile Street, Layton, Utah
Release NUB; Facility ID 3000500

Sample ID/ TOC	DATE	TPH-DRO	TPH-GRO	BENZENE	ETHYL- BENZENE	MTBE	NAPH- THALENE	TOLUENE	XYLENES	FPT	DTW	Groundwater Elevation
	MM/DD/YY	(mg/L)	(mg/L)	(mg/L)	(mg/L)	(mg/L)	(mg/L)	(mg/L)	(mg/L)	(feet)	(feet)	(feet)
DERR ISL		1	1	0.005	0.7	0.2	0.7	1	10			
DERR Tier 1		10	10	0.30	4	0.2	0.7	3	10			
MW-37	04/02/19	<1.0	<0.125	0.0860	<0.012	<0.005	<0.012	<0.012	<0.012	NM	NM	-
4326.48	09/04/19	<0.105	0.334	<0.00100	<0.00100	<0.00100	<0.00100	<0.00100	<0.00100	0.00	9.58	4316.90
	01/06/20	<0.100	<0.500	<0.00100	<0.00100	<0.00100	<0.00100	<0.00100	<0.00100	0.00	10.10	4316.38
	04/01/20	<0.100	<0.500	<0.00100	<0.00100	<0.00100	<0.00100	<0.00100	<0.00100	0.00	9.84	4316.64
	10/29/20	<0.0329	<0.100	<0.00100	<0.00100	<0.00100	<0.00100	<0.00100	<0.00100	0.00	10.36	4316.12
	01/27/21	<0.100	<0.500	<0.00100	<0.00100	<0.00100	<0.00500	<0.00100	<0.00300	0.00	10.79	4315.69
	04/07/21	<0.100	<0.500	<0.00100	<0.00100	<0.00100	<0.00500	<0.00100	<0.00300	0.00	10.40	4316.08
	07/14/21	<0.100	<0.500	<0.00100	<0.00100	<0.00100	<0.00500	<0.00100	<0.00300	0.00	10.37	4316.11
	10/04/2021	<0.100	<0.500	<0.00100	<0.00100	<0.00100	<0.00500	<0.00100	<0.00300	0.00	10.53	4315.95
	1/11/2022	<0.100	<0.500	<0.00100	<0.00100	<0.00100	<0.00500	<0.00100	<0.00300	0.00	10.11	4316.37
	7/18/2022	<1	<0.125	<0.005	<0.012	<0.005	<0.012	<0.012	<0.012	0.00	10.31	4316.17
	10/18/2022	<1	<0.125	<0.005	<0.012	<0.005	<0.012	<0.012	<0.012	0.00	10.65	4315.83
	1/28/2023	<1	<0.125	<0.005	<0.012	<0.005	<0.012	<0.012	<0.012	0.00	9.33	4317.15
MW-38	07/15/21	<0.100	<0.500	0.000262	<0.00100	0.000402	<0.00500	<0.00100	0.000332	0.00	10.32	4315.53
4325.85	10/04/2021	<0.100	<0.500	<0.00100	<0.00100	0.000765	<0.00500	<0.00100	0.000397	0.00	10.55	4315.30
	1/11/2022	<0.100	<0.500	<0.00100	<0.00100	0.000217	<0.00500	<0.00100	0.000222	0.00	10.04	4315.81
	5/12/2022	<1.0	<0.125	<0.005	<0.012	<0.005	<0.012	<0.012	<0.012	0.00	NM	
	7/18/2022	<1	<0.125	<0.005	<0.012	<0.005	<0.012	<0.012	<0.012	0.00	10.15	4315.70
	10/19/2022	<1	<0.125	<0.005	<0.012	<0.005	<0.012	<0.012	<0.012	0.00	10.62	4315.23
	1/28/2023	<1	<0.125	<0.005	<0.012	<0.005	<0.012	<0.012	<0.012	0.00	9.34	4316.51
MW-39	07/15/21	<0.100	<0.500	0.000285	<0.00100	<0.00100	<0.00500	<0.00100	<0.00300	0.00	10.20	4315.29
4325.49	10/04/2021	<0.100	<0.500	<0.00100	<0.00100	0.000286	<0.00500	<0.00100	<0.00300	0.00	10.46	4315.03
	1/11/2022	<0.100	<0.500	<0.00100	<0.00100	0.0002	<0.00500	<0.00100	<0.00300	0.00	10.02	4315.47
	7/18/2022	<1	<0.125	<0.005	<0.012	<0.005	<0.012	<0.012	<0.012	0.00	10.00	4315.49
	10/18/2022	<1	<0.125	<0.005	<0.012	<0.005	<0.012	<0.012	<0.012	0.00	10.50	4314.99
	1/28/2023	<1	<0.125	<0.005	<0.012	<0.005	<0.012	<0.012	<0.012	0.00	9.36	4316.13

Table 1
Groundwater Analytical Results and Elevation Data
Triple Stop Chevron
1034 West Gentile Street, Layton, Utah
Release NUB; Facility ID 3000500

Sample ID/ TOC	DATE	TPH-DRO	TPH-GRO	BENZENE	ETHYL- BENZENE	MTBE	NAPH- THALENE	TOLUENE	XYLENES	FPT	DTW	Groundwater Elevation
	MM/DD/YY	(mg/L)	(mg/L)	(mg/L)	(mg/L)	(mg/L)	(mg/L)	(mg/L)	(mg/L)	(feet)	(feet)	(feet)
DERR ISL		1	1	0.005	0.7	0.2	0.7	1	10			
DERR Tier 1		10	10	0.30	4	0.2	0.7	3	10			
MW-40	10/07/2021	0.0794	1.11	0.191	0.064	<0.00100	0.0134	0.0230	0.245	0.00	9.35	4318.12
4327.47	1/12/2022	0.299	4.16	0.591	0.301	<0.00100	0.0311	0.0403	0.713	0.00		4327.47
	4/27/2022	<1	0.595	0.038	0.042	<0.005	<0.012	<0.012	0.043	0.00	9.77	4317.70
	5/12/2022	<1	0.666	0.103	0.013	<0.005	0.016	0.013	0.235	0.00	NM	
	7/18/2022	<1	<0.125	<0.005	<0.012	<0.005	<0.012	<0.012	<0.012	0.00	9.11	4318.36
	10/20/2022	<1	<0.125	<0.005	<0.012	<0.005	<0.012	<0.012	<0.012	0.00	9.45	4318.02
	1/30/2023	<1	<0.125	<0.005	<0.012	<0.005	<0.012	<0.012	<0.012	0.00	8.09	4319.38
MW-41	10/07/2021	<0.200	0.135	0.0346	0.00186	<0.00100	0.0283	0.000321	0.00284	0.00	11.15	4317.68
4328.83	1/12/2022	0.104	2.31	0.948	0.00063	<0.0001	0.00914	0.00326	0.0374	0.00		4328.83
	4/27/2022	<1	<0.125	0.017	<0.012	<0.005	<0.012	<0.012	<0.012	0.00	10.64	4318.19
	5/12/2022	<1	0.146	0.146	<0.012	<0.005	<0.012	<0.012	<0.012	0.00	NM	
	7/18/2022	1.6	3.97	0.780	<0.012	<0.005	<0.012	<0.012	0.19	0.00	10.92	4317.91
	10/20/2022	<1	0.565	0.071	<0.012	<0.005	<0.012	<0.012	<0.012	0.00	11.48	4317.35
	1/30/2023	<1	<0.125	<0.005	<0.012	<0.005	<0.012	<0.012	<0.012	0.00	9.85	4318.98
MW-42	10/07/2021	0.610	13.3	6.57	0.576	<0.00100	0.0593	1.06	1.62	0.00	9.90	4316.94
4326.84	1/12/2022	0.292	<100	3.07	0.384	<0.20	<1.0	0.114	0.203	0.00		4326.84
	4/27/2022	1.400	7.76	4.28	0.442	<0.005	0.063	0.245	1.3	0.00	9.49	4317.35
	5/12/2022	<1	1.32	0.854	0.025	<0.005	0.016	0.043	0.174	0.00	NM	
	6/10/2022	<1	<0.125	<0.005	<0.012	<0.005	<0.012	<0.012	<0.012	0.00	NM	
	7/19/2022	1.3	6.48	2.36	0.29	<0.005	0.062	0.065	0.609	0.00	9.61	4317.23
	10/19/2022	<1	<0.125	0.101	0.014	<0.005	<0.012	<0.012	<0.012	0.00	10.00	4316.84
	1/30/2023	<1	0.259	0.203	0.027	<0.005	<0.012	<0.012	0.029	0.00	8.68	4318.16

**Table 1
Groundwater Analytical Results and Elevation Data
Triple Stop Chevron
1034 West Gentile Street, Layton, Utah
Release NUB; Facility ID 3000500**

Sample ID/ TOC	DATE	TPH-DRO	TPH-GRO	BENZENE	ETHYL- BENZENE	MTBE	NAPH- THALENE	TOLUENE	XYLENES	FPT	DTW	Groundwater Elevation
	MM/DD/YY	(mg/L)	(mg/L)	(mg/L)	(mg/L)	(mg/L)	(mg/L)	(mg/L)	(mg/L)	(feet)	(feet)	(feet)
DERR ISL		1	1	0.005	0.7	0.2	0.7	1	10			
DERR Tier 1		10	10	0.30	4	0.2	0.7	3	10			
MW-43	4/27/2022	<1	<0.125	0.022	<0.012	<0.005	<0.012	<0.012	<0.012	0.00	NM	
4326.93	5/12/2022	<1	<0.125	<0.005	<0.012	<0.005	<0.012	<0.012	<0.012	0.00	NM	
	7/19/2022	<1	<0.125	<0.005	<0.012	<0.005	<0.012	<0.012	<0.012	0.00	10.12	4316.81
	10/19/2022	<1	<0.125	<0.005	<0.012	<0.005	<0.012	<0.012	<0.012	0.00	10.52	4316.41
	1/30/2023	<1	<0.125	<0.005	<0.012	<0.005	<0.012	<0.012	<0.012	0.00	9.13	4317.80
MW-44	4/27/2022	<1	2.61	0.843	0.198	<0.005	0.028	0.059	0.46	0.00	NM	
4327.03	5/12/2022	<1	<0.125	<0.005	<0.012	<0.005	<0.012	<0.012	<0.012	0.00	NM	
	7/19/2022	1.7	2.93	0.874	0.052	<0.005	0.046	<0.012	0.079	0.00	9.44	4317.59
	10/19/2022	1.1	0.527	0.189	<0.012	<0.005	<0.012	<0.012	<0.012	0.00	9.81	4317.22
	1/30/2023	<1	1.12	0.976	0.034	<0.005	<0.012	0.014	0.097	0.00	8.44	4318.59
MW-45	4/27/2022	<1	1.09	0.187	0.087	<0.005	0.013	0.025	0.42	0.00	NM	
4329.24	5/12/2022	2.0	4.47	0.901	0.192	<0.005	0.034	0.834	1.25	0.00	NM	
	7/18/2022	1.5	5.6	0.963	0.308	<0.005	0.035	0.162	1.08	0.00	10.63	4318.61
	10/19/2022	1.5	0.784	0.161	0.082	<0.005	<0.012	0.02	0.266	0.00	10.98	4318.26
	1/30/2023	<1	0.848	0.021	0.06	<0.005	<0.012	<0.012	0.026	0.00	9.54	4319.70
EW-3	03/31/20	12.2	82.8	4.14	1.87	<0.0500	0.458	4.290	23.600	0.00	10.43	4323.67
4334.10	04/08/21	8.00	20.4	0.0123	0.346	<0.0500	0.0777	0.271	2.11	0.00	11.04	4323.06
	7/19/2022	1.0	2.25	<0.005	0.017	<0.005	<0.012	<0.012	0.108	0.00	11.56	4322.54
	10/18/2022	1.4	1.97	<0.005	0.033	<0.005	0.012	<0.012	0.221	0.00	11.99	4322.11
	1/28/2023	<1	<0.125	<0.005	<0.012	<0.005	<0.012	<0.012	0.028	0.00	10.03	4324.07
EW-4	04/08/21	7.38	38.9	<0.100	0.462	<0.100	0.181	0.129	6.860	0.00	11.74	-
	7/19/2022	7.7	14.1	<0.005	<0.012	<0.005	0.012	<0.012	0.016	0.00	12.58	
	10/18/2022	1.3	0.919	<0.005	<0.012	<0.005	<0.012	<0.012	<0.012	0.00	12.75	
	1/28/2023	<1	0.298	<0.005	<0.012	<0.005	<0.012	<0.012	<0.012	0.00	10.96	

Table 1
Groundwater Analytical Results and Elevation Data
Triple Stop Chevron
1034 West Gentile Street, Layton, Utah
Release NUB; Facility ID 3000500

Sample ID/ TOC	DATE	TPH-DRO	TPH-GRO	BENZENE	ETHYL- BENZENE	MTBE	NAPH- THALENE	TOLUENE	XYLENES	FPT	DTW	Groundwater Elevation
	MM/DD/YY	(mg/L)	(mg/L)	(mg/L)	(mg/L)	(mg/L)	(mg/L)	(mg/L)	(mg/L)	(feet)	(feet)	(feet)
DERR ISL		1	1	0.005	0.7	0.2	0.7	1	10			
DERR Tier 1		10	10	0.30	4	0.2	0.7	3	10			
RW-1	09/18/19	5.81	54.3	1.21	1.22	<0.100	0.246	3.53	10.6	0.00	NM	-
	04/02/20	2.49	14.4	<0.100	0.36	<0.100	<0.500	0.644	3.14	0.00	NM	-
RW-2	09/18/19	6.23	143	11.60	2.20	<0.500	0.303	18.5	16.7	0.00	NM	-
	04/02/20	3.81	79.7	4.08	1.51	<0.0500	0.148	13.2	12.9	0.00	NM	-
	04/08/21	13.7	86.3	2.43	1.16	<0.100	0.384	9.98	17.4	0.00	NM	-
	07/13/21	3.52	76.2	0.796	0.422	<0.100	0.199	4.49	4.38	0.00	NM	-
	10/08/2021	6.57	31.2	0.982	1.04	<0.100	0.363	7.04	7.95	0.00	NM	
	1/12/2022	4.6	23	0.0277	0.955	<0.100	0.214	3.49	6.37	0.00	NM	
AS-2	4/27/2022	<1	<0.125	<0.005	<0.012	<0.005	<0.012	<0.012	<0.012	0.00	NM	
AS-3	4/27/2022	<1	<0.125	<0.005	<0.012	<0.005	<0.012	<0.012	<0.012	0.00	NM	
AS-6	4/27/2022	<1	<0.125	<0.005	<0.012	<0.005	<0.012	<0.012	<0.012	0.00	NM	

Notes:

* The sample labels for MW-3 & MW-4 were reversed on 3/15/19. Resampled on 3/19/19.

TOC = Top of Casing Elevation

TPH -GRO = Total Petroleum Hydrocarbons as Gasoline

TPH--DRO = Total Petroleum Hydrocarbons as Diesel

DTW = Depth to groundwater

FPT = Free Product Thickness

DERR = Utah Division of Environmental Response and Remediation

ISL = Initial Screening Level

Tier 1 = Tier 1 Screening Level

mg/l = milligram/liter



2/6/2023

Work Order: 23A1970
Project: Triple Stop Chevron

Rockwell Solutions, Inc
Attn: Dave Hansen
718 East Bridger Lane
Elk Ridge, UT 84651

Client Service Contact: 801.262.7299

The analyses presented on this report were performed in accordance with the National Environmental Laboratory Accreditation Program (NELAP) unless noted in the comments, flags, or case narrative. If the report is to be used for regulatory compliance, it should be presented in its entirety, and not be altered.



Approved By:

Mark Broadhead, Project Manager



Chemtech-Ford Laboratories

Serving the Intermountain West Since 1953

9632 South 500 West
Sandy, UT 84070
O:(801) 262-7299 F: (866) 792-0093
www.ChemtechFord.com



Certificate of Analysis

Rockwell Solutions, Inc
Dave Hansen
718 East Bridger Lane
Elk Ridge, UT 84651

PO#:
Receipt: 1/31/23 9:00 @ 0.6 °C
Date Reported: 2/6/2023
Project Name: Triple Stop Chevron

Sample ID: MW-1

Matrix: Water

Lab ID: 23A1970-01

Date Sampled: 1/30/23 16:15

Sampled By: David Hansen

	<u>Result</u>	<u>Units</u>	<u>Minimum Reporting Limit</u>	<u>Method</u>	<u>Preparation Date/Time</u>	<u>Analysis Date/Time</u>	<u>Flag(s)</u>
MBTEXn							
Benzene	0.030	mg/L	0.005	EPA 8260D /5030A	1/31/23	1/31/23	
Ethylbenzene	0.145	mg/L	0.012	EPA 8260D /5030A	1/31/23	1/31/23	
Methyl tert-Butyl Ether (MTBE)	ND	mg/L	0.005	EPA 8260D /5030A	1/31/23	1/31/23	
Naphthalene	0.026	mg/L	0.012	EPA 8260D /5030A	1/31/23	1/31/23	
Toluene	0.018	mg/L	0.012	EPA 8260D /5030A	1/31/23	1/31/23	
Xylenes, total	0.430	mg/L	0.012	EPA 8260D /5030A	1/31/23	1/31/23	
Gasoline Range							
Gasoline Range Organics	1.35	mg/L	0.125	EPA 8260B/C /5030A	1/31/23	1/31/23	
Diesel Range							
Diesel Range Organics	1.0	mg/L	1.0	EPA 8015C/3510B	1/30/23	1/31/23	



Chemtech-Ford Laboratories

Serving the Intermountain West Since 1953

9632 South 500 West
Sandy, UT 84070
O:(801) 262-7299 F: (866) 792-0093
www.ChemtechFord.com



Certificate of Analysis

Rockwell Solutions, Inc
Dave Hansen
718 East Bridger Lane
Elk Ridge, UT 84651

PO#:
Receipt: 1/31/23 9:00 @ 0.6 °C
Date Reported: 2/6/2023
Project Name: Triple Stop Chevron

Sample ID: MW-2

Matrix: Water

Lab ID: 23A1970-02

Date Sampled: 1/30/23 15:45

Sampled By: David Hansen

	<u>Result</u>	<u>Units</u>	<u>Minimum Reporting Limit</u>	<u>Method</u>	<u>Preparation Date/Time</u>	<u>Analysis Date/Time</u>	<u>Flag(s)</u>
MBTEXn							
Benzene	0.206	mg/L	0.005	EPA 8260D /5030A	1/31/23	1/31/23	
Ethylbenzene	0.117	mg/L	0.012	EPA 8260D /5030A	1/31/23	1/31/23	
Methyl tert-Butyl Ether (MTBE)	ND	mg/L	0.005	EPA 8260D /5030A	1/31/23	1/31/23	
Naphthalene	0.028	mg/L	0.012	EPA 8260D /5030A	1/31/23	1/31/23	
Toluene	0.030	mg/L	0.012	EPA 8260D /5030A	1/31/23	1/31/23	
Xylenes, total	1.34	mg/L	0.012	EPA 8260D /5030A	1/31/23	1/31/23	
Gasoline Range							
Gasoline Range Organics	2.33	mg/L	0.125	EPA 8260B/C /5030A	1/31/23	1/31/23	
Diesel Range							
Diesel Range Organics	1.1	mg/L	1.0	EPA 8015C/3510B	1/30/23	1/31/23	



Chemtech-Ford Laboratories

Serving the Intermountain West Since 1953

9632 South 500 West
Sandy, UT 84070
O: (801) 262-7299 F: (866) 792-0093
www.ChemtechFord.com



Certificate of Analysis

Rockwell Solutions, Inc
Dave Hansen
718 East Bridger Lane
Elk Ridge, UT 84651

PO#:
Receipt: 1/31/23 9:00 @ 0.6 °C
Date Reported: 2/6/2023
Project Name: Triple Stop Chevron

Sample ID: MW-3

Matrix: Water

Lab ID: 23A1970-03

Date Sampled: 1/30/23 10:45

Sampled By: David Hansen

	<u>Result</u>	<u>Units</u>	<u>Minimum Reporting Limit</u>	<u>Method</u>	<u>Preparation Date/Time</u>	<u>Analysis Date/Time</u>	<u>Flag(s)</u>
MBTEXn							
Benzene	ND	mg/L	0.005	EPA 8260D /5030A	1/31/23	1/31/23	
Ethylbenzene	ND	mg/L	0.012	EPA 8260D /5030A	1/31/23	1/31/23	
Methyl tert-Butyl Ether (MTBE)	ND	mg/L	0.005	EPA 8260D /5030A	1/31/23	1/31/23	
Naphthalene	ND	mg/L	0.012	EPA 8260D /5030A	1/31/23	1/31/23	
Toluene	ND	mg/L	0.012	EPA 8260D /5030A	1/31/23	1/31/23	
Xylenes, total	ND	mg/L	0.012	EPA 8260D /5030A	1/31/23	1/31/23	
Gasoline Range							
Gasoline Range Organics	ND	mg/L	0.125	EPA 8260B/C /5030A	1/31/23	1/31/23	
Diesel Range							
Diesel Range Organics	ND	mg/L	1.0	EPA 8015C/3510B	1/30/23	1/31/23	



Chemtech-Ford Laboratories

Serving the Intermountain West Since 1953

9632 South 500 West
Sandy, UT 84070
O:(801) 262-7299 F: (866) 792-0093
www.ChemtechFord.com



Certificate of Analysis

Rockwell Solutions, Inc
Dave Hansen
718 East Bridger Lane
Elk Ridge, UT 84651

PO#:
Receipt: 1/31/23 9:00 @ 0.6 °C
Date Reported: 2/6/2023
Project Name: Triple Stop Chevron

Sample ID: MW-4

Matrix: Water

Lab ID: 23A1970-04

Date Sampled: 1/30/23 11:15

Sampled By: David Hansen

	<u>Result</u>	<u>Units</u>	<u>Minimum Reporting Limit</u>	<u>Method</u>	<u>Preparation Date/Time</u>	<u>Analysis Date/Time</u>	<u>Flag(s)</u>
MBTEXn							
Benzene	ND	mg/L	0.005	EPA 8260D /5030A	1/31/23	1/31/23	
Ethylbenzene	ND	mg/L	0.012	EPA 8260D /5030A	1/31/23	1/31/23	
Methyl tert-Butyl Ether (MTBE)	ND	mg/L	0.005	EPA 8260D /5030A	1/31/23	1/31/23	
Naphthalene	ND	mg/L	0.012	EPA 8260D /5030A	1/31/23	1/31/23	
Toluene	ND	mg/L	0.012	EPA 8260D /5030A	1/31/23	1/31/23	
Xylenes, total	ND	mg/L	0.012	EPA 8260D /5030A	1/31/23	1/31/23	
Gasoline Range							
Gasoline Range Organics	ND	mg/L	0.125	EPA 8260B/C /5030A	1/31/23	1/31/23	
Diesel Range							
Diesel Range Organics	ND	mg/L	1.0	EPA 8015C/3510B	1/30/23	1/31/23	



Certificate of Analysis

Rockwell Solutions, Inc
Dave Hansen
718 East Bridger Lane
Elk Ridge, UT 84651

PO#:
Receipt: 1/31/23 9:00 @ 0.6 °C
Date Reported: 2/6/2023
Project Name: Triple Stop Chevron

Sample ID: MW-9

Matrix: Water

Lab ID: 23A1970-05

Date Sampled: 1/28/23 9:30

Sampled By: David Hansen

	<u>Result</u>	<u>Units</u>	<u>Minimum Reporting Limit</u>	<u>Method</u>	<u>Preparation Date/Time</u>	<u>Analysis Date/Time</u>	<u>Flag(s)</u>
MBTEXn							
Benzene	ND	mg/L	0.005	EPA 8260D /5030A	1/31/23	1/31/23	
Ethylbenzene	ND	mg/L	0.012	EPA 8260D /5030A	1/31/23	1/31/23	
Methyl tert-Butyl Ether (MTBE)	ND	mg/L	0.005	EPA 8260D /5030A	1/31/23	1/31/23	
Naphthalene	ND	mg/L	0.012	EPA 8260D /5030A	1/31/23	1/31/23	
Toluene	ND	mg/L	0.012	EPA 8260D /5030A	1/31/23	1/31/23	
Xylenes, total	ND	mg/L	0.012	EPA 8260D /5030A	1/31/23	1/31/23	
Gasoline Range							
Gasoline Range Organics	ND	mg/L	0.125	EPA 8260B/C /5030A	1/31/23	1/31/23	
Diesel Range							
Diesel Range Organics	ND	mg/L	1.0	EPA 8015C/3510B	1/30/23	1/31/23	



Certificate of Analysis

Rockwell Solutions, Inc
Dave Hansen
718 East Bridger Lane
Elk Ridge, UT 84651

PO#:
Receipt: 1/31/23 9:00 @ 0.6 °C
Date Reported: 2/6/2023
Project Name: Triple Stop Chevron

Sample ID: MW-10

Matrix: Water

Lab ID: 23A1970-06

Date Sampled: 1/28/23 14:00

Sampled By: David Hansen

	<u>Result</u>	<u>Units</u>	<u>Minimum Reporting Limit</u>	<u>Method</u>	<u>Preparation Date/Time</u>	<u>Analysis Date/Time</u>	<u>Flag(s)</u>
MBTEXn							
Benzene	ND	mg/L	0.005	EPA 8260D /5030A	1/31/23	1/31/23	
Ethylbenzene	ND	mg/L	0.012	EPA 8260D /5030A	1/31/23	1/31/23	
Methyl tert-Butyl Ether (MTBE)	ND	mg/L	0.005	EPA 8260D /5030A	1/31/23	1/31/23	
Naphthalene	ND	mg/L	0.012	EPA 8260D /5030A	1/31/23	1/31/23	
Toluene	ND	mg/L	0.012	EPA 8260D /5030A	1/31/23	1/31/23	
Xylenes, total	0.121	mg/L	0.012	EPA 8260D /5030A	1/31/23	1/31/23	
Gasoline Range							
Gasoline Range Organics	0.439	mg/L	0.125	EPA 8260B/C /5030A	1/31/23	1/31/23	
Diesel Range							
Diesel Range Organics	1.6	mg/L	1.0	EPA 8015C/3510B	1/30/23	1/31/23	



Certificate of Analysis

Rockwell Solutions, Inc
Dave Hansen
718 East Bridger Lane
Elk Ridge, UT 84651

PO#:
Receipt: 1/31/23 9:00 @ 0.6 °C
Date Reported: 2/6/2023
Project Name: Triple Stop Chevron

Sample ID: MW-12

Matrix: Water

Lab ID: 23A1970-07

Date Sampled: 1/28/23 12:30

Sampled By: David Hansen

	<u>Result</u>	<u>Units</u>	<u>Minimum Reporting Limit</u>	<u>Method</u>	<u>Preparation Date/Time</u>	<u>Analysis Date/Time</u>	<u>Flag(s)</u>
MBTEXn							
Benzene	ND	mg/L	0.005	EPA 8260D /5030A	1/31/23	1/31/23	
Ethylbenzene	ND	mg/L	0.012	EPA 8260D /5030A	1/31/23	1/31/23	
Methyl tert-Butyl Ether (MTBE)	ND	mg/L	0.005	EPA 8260D /5030A	1/31/23	1/31/23	
Naphthalene	ND	mg/L	0.012	EPA 8260D /5030A	1/31/23	1/31/23	
Toluene	ND	mg/L	0.012	EPA 8260D /5030A	1/31/23	1/31/23	
Xylenes, total	ND	mg/L	0.012	EPA 8260D /5030A	1/31/23	1/31/23	
Gasoline Range							
Gasoline Range Organics	ND	mg/L	0.125	EPA 8260B/C /5030A	1/31/23	1/31/23	
Diesel Range							
Diesel Range Organics	ND	mg/L	1.0	EPA 8015C/3510B	1/30/23	1/31/23	



Chemtech-Ford Laboratories

Serving the Intermountain West Since 1953

9632 South 500 West
Sandy, UT 84070
O: (801) 262-7299 F: (866) 792-0093
www.ChemtechFord.com



Certificate of Analysis

Rockwell Solutions, Inc
Dave Hansen
718 East Bridger Lane
Elk Ridge, UT 84651

PO#:
Receipt: 1/31/23 9:00 @ 0.6 °C
Date Reported: 2/6/2023
Project Name: Triple Stop Chevron

Sample ID: MW-13

Matrix: Water

Lab ID: 23A1970-08

Date Sampled: 1/28/23 13:00

Sampled By: David Hansen

	<u>Result</u>	<u>Units</u>	<u>Minimum Reporting Limit</u>	<u>Method</u>	<u>Preparation Date/Time</u>	<u>Analysis Date/Time</u>	<u>Flag(s)</u>
MBTEXn							
Benzene	ND	mg/L	0.005	EPA 8260D /5030A	1/31/23	1/31/23	
Ethylbenzene	ND	mg/L	0.012	EPA 8260D /5030A	1/31/23	1/31/23	
Methyl tert-Butyl Ether (MTBE)	ND	mg/L	0.005	EPA 8260D /5030A	1/31/23	1/31/23	
Naphthalene	ND	mg/L	0.012	EPA 8260D /5030A	1/31/23	1/31/23	
Toluene	ND	mg/L	0.012	EPA 8260D /5030A	1/31/23	1/31/23	
Xylenes, total	ND	mg/L	0.012	EPA 8260D /5030A	1/31/23	1/31/23	
Gasoline Range							
Gasoline Range Organics	0.133	mg/L	0.125	EPA 8260B/C /5030A	1/31/23	1/31/23	
Diesel Range							
Diesel Range Organics	ND	mg/L	1.0	EPA 8015C/3510B	1/30/23	1/31/23	



Certificate of Analysis

Rockwell Solutions, Inc
Dave Hansen
718 East Bridger Lane
Elk Ridge, UT 84651

PO#:
Receipt: 1/31/23 9:00 @ 0.6 °C
Date Reported: 2/6/2023
Project Name: Triple Stop Chevron

Sample ID: MW-14

Matrix: Water

Lab ID: 23A1970-09

Date Sampled: 1/28/23 13:30

Sampled By: David Hansen

	<u>Result</u>	<u>Units</u>	<u>Minimum Reporting Limit</u>	<u>Method</u>	<u>Preparation Date/Time</u>	<u>Analysis Date/Time</u>	<u>Flag(s)</u>
MBTEXn							
Benzene	ND	mg/L	0.005	EPA 8260D /5030A	1/31/23	1/31/23	
Ethylbenzene	ND	mg/L	0.012	EPA 8260D /5030A	1/31/23	1/31/23	
Methyl tert-Butyl Ether (MTBE)	ND	mg/L	0.005	EPA 8260D /5030A	1/31/23	1/31/23	
Naphthalene	ND	mg/L	0.012	EPA 8260D /5030A	1/31/23	1/31/23	
Toluene	ND	mg/L	0.012	EPA 8260D /5030A	1/31/23	1/31/23	
Xylenes, total	ND	mg/L	0.012	EPA 8260D /5030A	1/31/23	1/31/23	
Gasoline Range							
Gasoline Range Organics	ND	mg/L	0.125	EPA 8260B/C /5030A	1/31/23	1/31/23	
Diesel Range							
Diesel Range Organics	ND	mg/L	1.0	EPA 8015C/3510B	1/30/23	1/31/23	



Chemtech-Ford Laboratories

Serving the Intermountain West Since 1953

9632 South 500 West
Sandy, UT 84070
O:(801) 262-7299 F: (866) 792-0093
www.ChemtechFord.com



Certificate of Analysis

Rockwell Solutions, Inc
Dave Hansen
718 East Bridger Lane
Elk Ridge, UT 84651

PO#:
Receipt: 1/31/23 9:00 @ 0.6 °C
Date Reported: 2/6/2023
Project Name: Triple Stop Chevron

Sample ID: MW-19

Matrix: Water

Lab ID: 23A1970-10

Date Sampled: 1/30/23 14:45

Sampled By: David Hansen

	<u>Result</u>	<u>Units</u>	<u>Minimum Reporting Limit</u>	<u>Method</u>	<u>Preparation Date/Time</u>	<u>Analysis Date/Time</u>	<u>Flag(s)</u>
MBTEXn							
Benzene	0.020	mg/L	0.005	EPA 8260D /5030A	1/31/23	1/31/23	
Ethylbenzene	ND	mg/L	0.012	EPA 8260D /5030A	1/31/23	1/31/23	
Methyl tert-Butyl Ether (MTBE)	ND	mg/L	0.005	EPA 8260D /5030A	1/31/23	1/31/23	
Naphthalene	ND	mg/L	0.012	EPA 8260D /5030A	1/31/23	1/31/23	
Toluene	ND	mg/L	0.012	EPA 8260D /5030A	1/31/23	1/31/23	
Xylenes, total	ND	mg/L	0.012	EPA 8260D /5030A	1/31/23	1/31/23	
Gasoline Range							
Gasoline Range Organics	ND	mg/L	0.125	EPA 8260B/C /5030A	1/31/23	1/31/23	
Diesel Range							
Diesel Range Organics	ND	mg/L	1.0	EPA 8015C/3510B	1/30/23	1/31/23	



Chemtech-Ford Laboratories

Serving the Intermountain West Since 1953

9632 South 500 West
Sandy, UT 84070
O:(801) 262-7299 F: (866) 792-0093
www.ChemtechFord.com



Certificate of Analysis

Rockwell Solutions, Inc
Dave Hansen
718 East Bridger Lane
Elk Ridge, UT 84651

PO#:
Receipt: 1/31/23 9:00 @ 0.6 °C
Date Reported: 2/6/2023
Project Name: Triple Stop Chevron

Sample ID: MW-20

Matrix: Water

Lab ID: 23A1970-11

Date Sampled: 1/30/23 10:15

Sampled By: David Hansen

	<u>Result</u>	<u>Units</u>	<u>Minimum Reporting Limit</u>	<u>Method</u>	<u>Preparation Date/Time</u>	<u>Analysis Date/Time</u>	<u>Flag(s)</u>
MBTEXn							
Benzene	ND	mg/L	0.005	EPA 8260D /5030A	1/31/23	1/31/23	
Ethylbenzene	ND	mg/L	0.012	EPA 8260D /5030A	1/31/23	1/31/23	
Methyl tert-Butyl Ether (MTBE)	ND	mg/L	0.005	EPA 8260D /5030A	1/31/23	1/31/23	
Naphthalene	ND	mg/L	0.012	EPA 8260D /5030A	1/31/23	1/31/23	
Toluene	ND	mg/L	0.012	EPA 8260D /5030A	1/31/23	1/31/23	
Xylenes, total	ND	mg/L	0.012	EPA 8260D /5030A	1/31/23	1/31/23	
Gasoline Range							
Gasoline Range Organics	ND	mg/L	0.125	EPA 8260B/C /5030A	1/31/23	1/31/23	
Diesel Range							
Diesel Range Organics	ND	mg/L	1.0	EPA 8015C/3510B	1/30/23	1/31/23	



Chemtech-Ford Laboratories

Serving the Intermountain West Since 1953

9632 South 500 West
Sandy, UT 84070
O:(801) 262-7299 F: (866) 792-0093
www.ChemtechFord.com



Certificate of Analysis

Rockwell Solutions, Inc
Dave Hansen
718 East Bridger Lane
Elk Ridge, UT 84651

PO#:
Receipt: 1/31/23 9:00 @ 0.6 °C
Date Reported: 2/6/2023
Project Name: Triple Stop Chevron

Sample ID: MW-21

Matrix: Water

Lab ID: 23A1970-12

Date Sampled: 1/30/23 9:45

Sampled By: David Hansen

	<u>Result</u>	<u>Units</u>	<u>Minimum Reporting Limit</u>	<u>Method</u>	<u>Preparation Date/Time</u>	<u>Analysis Date/Time</u>	<u>Flag(s)</u>
MBTEXn							
Benzene	0.007	mg/L	0.005	EPA 8260D /5030A	1/31/23	1/31/23	
Ethylbenzene	ND	mg/L	0.012	EPA 8260D /5030A	1/31/23	1/31/23	
Methyl tert-Butyl Ether (MTBE)	ND	mg/L	0.005	EPA 8260D /5030A	1/31/23	1/31/23	
Naphthalene	ND	mg/L	0.012	EPA 8260D /5030A	1/31/23	1/31/23	
Toluene	ND	mg/L	0.012	EPA 8260D /5030A	1/31/23	1/31/23	
Xylenes, total	ND	mg/L	0.012	EPA 8260D /5030A	1/31/23	1/31/23	
Gasoline Range							
Gasoline Range Organics	ND	mg/L	0.125	EPA 8260B/C /5030A	1/31/23	1/31/23	
Diesel Range							
Diesel Range Organics	ND	mg/L	1.0	EPA 8015C/3510B	1/30/23	1/31/23	



Chemtech-Ford Laboratories

Serving the Intermountain West Since 1953

9632 South 500 West
Sandy, UT 84070
O: (801) 262-7299 F: (866) 792-0093
www.ChemtechFord.com



Certificate of Analysis

Rockwell Solutions, Inc
Dave Hansen
718 East Bridger Lane
Elk Ridge, UT 84651

PO#:
Receipt: 1/31/23 9:00 @ 0.6 °C
Date Reported: 2/6/2023
Project Name: Triple Stop Chevron

Sample ID: MW-22

Matrix: Water

Lab ID: 23A1970-13

Date Sampled: 1/28/23 11:30

Sampled By: David Hansen

	<u>Result</u>	<u>Units</u>	<u>Minimum Reporting Limit</u>	<u>Method</u>	<u>Preparation Date/Time</u>	<u>Analysis Date/Time</u>	<u>Flag(s)</u>
MBTEXn							
Benzene	ND	mg/L	0.005	EPA 8260D /5030A	1/31/23	1/31/23	
Ethylbenzene	ND	mg/L	0.012	EPA 8260D /5030A	1/31/23	1/31/23	
Methyl tert-Butyl Ether (MTBE)	ND	mg/L	0.005	EPA 8260D /5030A	1/31/23	1/31/23	
Naphthalene	ND	mg/L	0.012	EPA 8260D /5030A	1/31/23	1/31/23	
Toluene	ND	mg/L	0.012	EPA 8260D /5030A	1/31/23	1/31/23	
Xylenes, total	ND	mg/L	0.012	EPA 8260D /5030A	1/31/23	1/31/23	
Gasoline Range							
Gasoline Range Organics	ND	mg/L	0.125	EPA 8260B/C /5030A	1/31/23	1/31/23	
Diesel Range							
Diesel Range Organics	ND	mg/L	1.0	EPA 8015C/3510B	1/30/23	1/31/23	



Certificate of Analysis

Rockwell Solutions, Inc
Dave Hansen
718 East Bridger Lane
Elk Ridge, UT 84651

PO#:
Receipt: 1/31/23 9:00 @ 0.6 °C
Date Reported: 2/6/2023
Project Name: Triple Stop Chevron

Sample ID: MW-24

Matrix: Water

Lab ID: 23A1970-14

Date Sampled: 1/28/23 11:00

Sampled By: David Hansen

	<u>Result</u>	<u>Units</u>	<u>Minimum Reporting Limit</u>	<u>Method</u>	<u>Preparation Date/Time</u>	<u>Analysis Date/Time</u>	<u>Flag(s)</u>
MBTEXn							
Benzene	0.007	mg/L	0.005	EPA 8260D /5030A	1/31/23	1/31/23	
Ethylbenzene	ND	mg/L	0.012	EPA 8260D /5030A	1/31/23	1/31/23	
Methyl tert-Butyl Ether (MTBE)	ND	mg/L	0.005	EPA 8260D /5030A	1/31/23	1/31/23	
Naphthalene	ND	mg/L	0.012	EPA 8260D /5030A	1/31/23	1/31/23	
Toluene	ND	mg/L	0.012	EPA 8260D /5030A	1/31/23	1/31/23	
Xylenes, total	ND	mg/L	0.012	EPA 8260D /5030A	1/31/23	1/31/23	
Gasoline Range							
Gasoline Range Organics	ND	mg/L	0.125	EPA 8260B/C /5030A	1/31/23	1/31/23	
Diesel Range							
Diesel Range Organics	ND	mg/L	1.0	EPA 8015C/3510B	1/30/23	1/31/23	



Chemtech-Ford Laboratories

Serving the Intermountain West Since 1953

9632 South 500 West
Sandy, UT 84070
O:(801) 262-7299 F: (866) 792-0093
www.ChemtechFord.com



Certificate of Analysis

Rockwell Solutions, Inc
Dave Hansen
718 East Bridger Lane
Elk Ridge, UT 84651

PO#:
Receipt: 1/31/23 9:00 @ 0.6 °C
Date Reported: 2/6/2023
Project Name: Triple Stop Chevron

Sample ID: MW-25

Matrix: Water

Lab ID: 23A1970-15

Date Sampled: 1/28/23 10:30

Sampled By: David Hansen

	<u>Result</u>	<u>Units</u>	<u>Minimum Reporting Limit</u>	<u>Method</u>	<u>Preparation Date/Time</u>	<u>Analysis Date/Time</u>	<u>Flag(s)</u>
MBTEXn							
Benzene	ND	mg/L	0.005	EPA 8260D /5030A	1/31/23	1/31/23	
Ethylbenzene	ND	mg/L	0.012	EPA 8260D /5030A	1/31/23	1/31/23	
Methyl tert-Butyl Ether (MTBE)	ND	mg/L	0.005	EPA 8260D /5030A	1/31/23	1/31/23	
Naphthalene	ND	mg/L	0.012	EPA 8260D /5030A	1/31/23	1/31/23	
Toluene	ND	mg/L	0.012	EPA 8260D /5030A	1/31/23	1/31/23	
Xylenes, total	ND	mg/L	0.012	EPA 8260D /5030A	1/31/23	1/31/23	
Gasoline Range							
Gasoline Range Organics	ND	mg/L	0.125	EPA 8260B/C /5030A	1/31/23	1/31/23	
Diesel Range							
Diesel Range Organics	ND	mg/L	1.0	EPA 8015C/3510B	1/30/23	1/31/23	



Certificate of Analysis

Rockwell Solutions, Inc
Dave Hansen
718 East Bridger Lane
Elk Ridge, UT 84651

PO#:
Receipt: 1/31/23 9:00 @ 0.6 °C
Date Reported: 2/6/2023
Project Name: Triple Stop Chevron

Sample ID: MW-26

Matrix: Water

Lab ID: 23A1970-16

Date Sampled: 1/28/23 10:00

Sampled By: David Hansen

	<u>Result</u>	<u>Units</u>	<u>Minimum Reporting Limit</u>	<u>Method</u>	<u>Preparation Date/Time</u>	<u>Analysis Date/Time</u>	<u>Flag(s)</u>
MBTEXn							
Benzene	ND	mg/L	0.005	EPA 8260D /5030A	1/31/23	1/31/23	
Ethylbenzene	ND	mg/L	0.012	EPA 8260D /5030A	1/31/23	1/31/23	
Methyl tert-Butyl Ether (MTBE)	ND	mg/L	0.005	EPA 8260D /5030A	1/31/23	1/31/23	
Naphthalene	ND	mg/L	0.012	EPA 8260D /5030A	1/31/23	1/31/23	
Toluene	ND	mg/L	0.012	EPA 8260D /5030A	1/31/23	1/31/23	
Xylenes, total	ND	mg/L	0.012	EPA 8260D /5030A	1/31/23	1/31/23	
Gasoline Range							
Gasoline Range Organics	ND	mg/L	0.125	EPA 8260B/C /5030A	1/31/23	1/31/23	
Diesel Range							
Diesel Range Organics	ND	mg/L	1.0	EPA 8015C/3510B	1/30/23	1/31/23	



Chemtech-Ford Laboratories

Serving the Intermountain West Since 1953

9632 South 500 West
Sandy, UT 84070
O:(801) 262-7299 F: (866) 792-0093
www.ChemtechFord.com



Certificate of Analysis

Rockwell Solutions, Inc
Dave Hansen
718 East Bridger Lane
Elk Ridge, UT 84651

PO#:
Receipt: 1/31/23 9:00 @ 0.6 °C
Date Reported: 2/6/2023
Project Name: Triple Stop Chevron

Sample ID: MW-27

Matrix: Water

Lab ID: 23A1970-17

Date Sampled: 1/28/23 12:00

Sampled By: David Hansen

	<u>Result</u>	<u>Units</u>	<u>Minimum Reporting Limit</u>	<u>Method</u>	<u>Preparation Date/Time</u>	<u>Analysis Date/Time</u>	<u>Flag(s)</u>
MBTEXn							
Benzene	0.012	mg/L	0.005	EPA 8260D /5030A	1/31/23	1/31/23	
Ethylbenzene	0.060	mg/L	0.012	EPA 8260D /5030A	1/31/23	1/31/23	
Methyl tert-Butyl Ether (MTBE)	ND	mg/L	0.005	EPA 8260D /5030A	1/31/23	1/31/23	
Naphthalene	ND	mg/L	0.012	EPA 8260D /5030A	1/31/23	1/31/23	
Toluene	0.058	mg/L	0.012	EPA 8260D /5030A	1/31/23	1/31/23	
Xylenes, total	0.184	mg/L	0.012	EPA 8260D /5030A	1/31/23	1/31/23	
Gasoline Range							
Gasoline Range Organics	0.457	mg/L	0.125	EPA 8260B/C /5030A	1/31/23	1/31/23	
Diesel Range							
Diesel Range Organics	ND	mg/L	1.0	EPA 8015C/3510B	1/30/23	1/31/23	



Certificate of Analysis

Rockwell Solutions, Inc
Dave Hansen
718 East Bridger Lane
Elk Ridge, UT 84651

PO#:
Receipt: 1/31/23 9:00 @ 0.6 °C
Date Reported: 2/6/2023
Project Name: Triple Stop Chevron

Sample ID: MW-29

Matrix: Water
Date Sampled: 1/30/23 11:45

Sampled By: David Hansen

Lab ID: 23A1970-18

	<u>Result</u>	<u>Units</u>	<u>Minimum Reporting Limit</u>	<u>Method</u>	<u>Preparation Date/Time</u>	<u>Analysis Date/Time</u>	<u>Flag(s)</u>
MBTEXn							
Benzene	ND	mg/L	0.005	EPA 8260D /5030A	1/31/23	1/31/23	
Ethylbenzene	ND	mg/L	0.012	EPA 8260D /5030A	1/31/23	1/31/23	
Methyl tert-Butyl Ether (MTBE)	ND	mg/L	0.005	EPA 8260D /5030A	1/31/23	1/31/23	
Naphthalene	ND	mg/L	0.012	EPA 8260D /5030A	1/31/23	1/31/23	
Toluene	ND	mg/L	0.012	EPA 8260D /5030A	1/31/23	1/31/23	
Xylenes, total	ND	mg/L	0.012	EPA 8260D /5030A	1/31/23	1/31/23	
Gasoline Range							
Gasoline Range Organics	ND	mg/L	0.125	EPA 8260B/C /5030A	1/31/23	1/31/23	
Diesel Range							
Diesel Range Organics	ND	mg/L	1.0	EPA 8015C/3510B	1/30/23	1/31/23	



Chemtech-Ford Laboratories

Serving the Intermountain West Since 1953

9632 South 500 West
Sandy, UT 84070
O: (801) 262-7299 F: (866) 792-0093
www.ChemtechFord.com



Certificate of Analysis

Rockwell Solutions, Inc
Dave Hansen
718 East Bridger Lane
Elk Ridge, UT 84651

PO#:
Receipt: 1/31/23 9:00 @ 0.6 °C
Date Reported: 2/6/2023
Project Name: Triple Stop Chevron

Sample ID: MW-30

Matrix: Water

Lab ID: 23A1970-19

Date Sampled: 1/30/23 13:15

Sampled By: David Hansen

	<u>Result</u>	<u>Units</u>	<u>Minimum Reporting Limit</u>	<u>Method</u>	<u>Preparation Date/Time</u>	<u>Analysis Date/Time</u>	<u>Flag(s)</u>
MBTEXn							
Benzene	ND	mg/L	0.005	EPA 8260D /5030A	1/31/23	1/31/23	
Ethylbenzene	ND	mg/L	0.012	EPA 8260D /5030A	1/31/23	1/31/23	
Methyl tert-Butyl Ether (MTBE)	ND	mg/L	0.005	EPA 8260D /5030A	1/31/23	1/31/23	
Naphthalene	ND	mg/L	0.012	EPA 8260D /5030A	1/31/23	1/31/23	
Toluene	ND	mg/L	0.012	EPA 8260D /5030A	1/31/23	1/31/23	
Xylenes, total	ND	mg/L	0.012	EPA 8260D /5030A	1/31/23	1/31/23	
Gasoline Range							
Gasoline Range Organics	ND	mg/L	0.125	EPA 8260B/C /5030A	1/31/23	1/31/23	
Diesel Range							
Diesel Range Organics	ND	mg/L	1.0	EPA 8015C/3510B	2/1/23	2/1/23	



Certificate of Analysis

Rockwell Solutions, Inc
Dave Hansen
718 East Bridger Lane
Elk Ridge, UT 84651

PO#:
Receipt: 1/31/23 9:00 @ 0.6 °C
Date Reported: 2/6/2023
Project Name: Triple Stop Chevron

Sample ID: MW-31

Matrix: Water

Lab ID: 23A1970-20

Date Sampled: 1/28/23 17:00

Sampled By: David Hansen

	<u>Result</u>	<u>Units</u>	<u>Minimum Reporting Limit</u>	<u>Method</u>	<u>Preparation Date/Time</u>	<u>Analysis Date/Time</u>	<u>Flag(s)</u>
MBTEXn							
Benzene	ND	mg/L	0.005	EPA 8260D /5030A	1/31/23	1/31/23	
Ethylbenzene	ND	mg/L	0.012	EPA 8260D /5030A	1/31/23	1/31/23	
Methyl tert-Butyl Ether (MTBE)	ND	mg/L	0.005	EPA 8260D /5030A	1/31/23	1/31/23	
Naphthalene	ND	mg/L	0.012	EPA 8260D /5030A	1/31/23	1/31/23	
Toluene	ND	mg/L	0.012	EPA 8260D /5030A	1/31/23	1/31/23	
Xylenes, total	ND	mg/L	0.012	EPA 8260D /5030A	1/31/23	1/31/23	
Gasoline Range							
Gasoline Range Organics	ND	mg/L	0.125	EPA 8260B/C /5030A	1/31/23	1/31/23	
Diesel Range							
Diesel Range Organics	ND	mg/L	1.0	EPA 8015C/3510B	2/1/23	2/1/23	



Chemtech-Ford Laboratories

Serving the Intermountain West Since 1953

9632 South 500 West
Sandy, UT 84070
O:(801) 262-7299 F: (866) 792-0093
www.ChemtechFord.com



Certificate of Analysis

Rockwell Solutions, Inc
Dave Hansen
718 East Bridger Lane
Elk Ridge, UT 84651

PO#:
Receipt: 1/31/23 9:00 @ 0.6 °C
Date Reported: 2/6/2023
Project Name: Triple Stop Chevron

Sample ID: MW-32

Matrix: Water

Lab ID: 23A1970-21

Date Sampled: 1/30/23 12:45

Sampled By: David Hansen

	<u>Result</u>	<u>Units</u>	<u>Minimum Reporting Limit</u>	<u>Method</u>	<u>Preparation Date/Time</u>	<u>Analysis Date/Time</u>	<u>Flag(s)</u>
MBTEXn							
Benzene	ND	mg/L	0.005	EPA 8260D /5030A	1/31/23	1/31/23	
Ethylbenzene	ND	mg/L	0.012	EPA 8260D /5030A	1/31/23	1/31/23	
Methyl tert-Butyl Ether (MTBE)	ND	mg/L	0.005	EPA 8260D /5030A	1/31/23	1/31/23	
Naphthalene	ND	mg/L	0.012	EPA 8260D /5030A	1/31/23	1/31/23	
Toluene	ND	mg/L	0.012	EPA 8260D /5030A	1/31/23	1/31/23	
Xylenes, total	ND	mg/L	0.012	EPA 8260D /5030A	1/31/23	1/31/23	
Gasoline Range							
Gasoline Range Organics	ND	mg/L	0.125	EPA 8260B/C /5030A	1/31/23	1/31/23	
Diesel Range							
Diesel Range Organics	ND	mg/L	1.0	EPA 8015C/3510B	2/1/23	2/1/23	



Certificate of Analysis

Rockwell Solutions, Inc
Dave Hansen
718 East Bridger Lane
Elk Ridge, UT 84651

PO#:
Receipt: 1/31/23 9:00 @ 0.6 °C
Date Reported: 2/6/2023
Project Name: Triple Stop Chevron

Sample ID: MW-37

Matrix: Water

Lab ID: 23A1970-22

Date Sampled: 1/28/23 16:30

Sampled By: David Hansen

	<u>Result</u>	<u>Units</u>	<u>Minimum Reporting Limit</u>	<u>Method</u>	<u>Preparation Date/Time</u>	<u>Analysis Date/Time</u>	<u>Flag(s)</u>
MBTEXn							
Benzene	ND	mg/L	0.005	EPA 8260D /5030A	1/31/23	1/31/23	
Ethylbenzene	ND	mg/L	0.012	EPA 8260D /5030A	1/31/23	1/31/23	
Methyl tert-Butyl Ether (MTBE)	ND	mg/L	0.005	EPA 8260D /5030A	1/31/23	1/31/23	
Naphthalene	ND	mg/L	0.012	EPA 8260D /5030A	1/31/23	1/31/23	
Toluene	ND	mg/L	0.012	EPA 8260D /5030A	1/31/23	1/31/23	
Xylenes, total	ND	mg/L	0.012	EPA 8260D /5030A	1/31/23	1/31/23	
Gasoline Range							
Gasoline Range Organics	ND	mg/L	0.125	EPA 8260B/C /5030A	1/31/23	1/31/23	
Diesel Range							
Diesel Range Organics	ND	mg/L	1.0	EPA 8015C/3510B	2/1/23	2/1/23	



Certificate of Analysis

Rockwell Solutions, Inc
Dave Hansen
718 East Bridger Lane
Elk Ridge, UT 84651

PO#:
Receipt: 1/31/23 9:00 @ 0.6 °C
Date Reported: 2/6/2023
Project Name: Triple Stop Chevron

Sample ID: MW-38

Matrix: Water

Lab ID: 23A1970-23

Date Sampled: 1/28/23 16:00

Sampled By: David Hansen

	<u>Result</u>	<u>Units</u>	<u>Minimum Reporting Limit</u>	<u>Method</u>	<u>Preparation Date/Time</u>	<u>Analysis Date/Time</u>	<u>Flag(s)</u>
MBTEXn							
Benzene	ND	mg/L	0.005	EPA 8260D /5030A	1/31/23	1/31/23	
Ethylbenzene	ND	mg/L	0.012	EPA 8260D /5030A	1/31/23	1/31/23	
Methyl tert-Butyl Ether (MTBE)	ND	mg/L	0.005	EPA 8260D /5030A	1/31/23	1/31/23	
Naphthalene	ND	mg/L	0.012	EPA 8260D /5030A	1/31/23	1/31/23	
Toluene	ND	mg/L	0.012	EPA 8260D /5030A	1/31/23	1/31/23	
Xylenes, total	ND	mg/L	0.012	EPA 8260D /5030A	1/31/23	1/31/23	
Gasoline Range							
Gasoline Range Organics	ND	mg/L	0.125	EPA 8260B/C /5030A	1/31/23	1/31/23	
Diesel Range							
Diesel Range Organics	ND	mg/L	1.0	EPA 8015C/3510B	2/1/23	2/1/23	



Certificate of Analysis

Rockwell Solutions, Inc
Dave Hansen
718 East Bridger Lane
Elk Ridge, UT 84651

PO#:
Receipt: 1/31/23 9:00 @ 0.6 °C
Date Reported: 2/6/2023
Project Name: Triple Stop Chevron

Sample ID: MW-39

Matrix: Water

Lab ID: 23A1970-24

Date Sampled: 1/28/23 15:30

Sampled By: David Hansen

	<u>Result</u>	<u>Units</u>	<u>Minimum Reporting Limit</u>	<u>Method</u>	<u>Preparation Date/Time</u>	<u>Analysis Date/Time</u>	<u>Flag(s)</u>
MBTEXn							
Benzene	ND	mg/L	0.005	EPA 8260D /5030A	1/31/23	1/31/23	
Ethylbenzene	ND	mg/L	0.012	EPA 8260D /5030A	1/31/23	1/31/23	
Methyl tert-Butyl Ether (MTBE)	ND	mg/L	0.005	EPA 8260D /5030A	1/31/23	1/31/23	
Naphthalene	ND	mg/L	0.012	EPA 8260D /5030A	1/31/23	1/31/23	
Toluene	ND	mg/L	0.012	EPA 8260D /5030A	1/31/23	1/31/23	
Xylenes, total	ND	mg/L	0.012	EPA 8260D /5030A	1/31/23	1/31/23	
Gasoline Range							
Gasoline Range Organics	ND	mg/L	0.125	EPA 8260B/C /5030A	1/31/23	1/31/23	
Diesel Range							
Diesel Range Organics	ND	mg/L	1.0	EPA 8015C/3510B	2/1/23	2/1/23	



Chemtech-Ford Laboratories

Serving the Intermountain West Since 1953

9632 South 500 West
Sandy, UT 84070
O:(801) 262-7299 F: (866) 792-0093
www.ChemtechFord.com



Certificate of Analysis

Rockwell Solutions, Inc
Dave Hansen
718 East Bridger Lane
Elk Ridge, UT 84651

PO#:
Receipt: 1/31/23 9:00 @ 0.6 °C
Date Reported: 2/6/2023
Project Name: Triple Stop Chevron

Sample ID: MW-40

Matrix: Water

Lab ID: 23A1970-25

Date Sampled: 1/30/23 15:15

Sampled By: David Hansen

	<u>Result</u>	<u>Units</u>	<u>Minimum Reporting Limit</u>	<u>Method</u>	<u>Preparation Date/Time</u>	<u>Analysis Date/Time</u>	<u>Flag(s)</u>
MBTEXn							
Benzene	ND	mg/L	0.005	EPA 8260D /5030A	1/31/23	1/31/23	
Ethylbenzene	ND	mg/L	0.012	EPA 8260D /5030A	1/31/23	1/31/23	
Methyl tert-Butyl Ether (MTBE)	ND	mg/L	0.005	EPA 8260D /5030A	1/31/23	1/31/23	
Naphthalene	ND	mg/L	0.012	EPA 8260D /5030A	1/31/23	1/31/23	
Toluene	ND	mg/L	0.012	EPA 8260D /5030A	1/31/23	1/31/23	
Xylenes, total	ND	mg/L	0.012	EPA 8260D /5030A	1/31/23	1/31/23	
Gasoline Range							
Gasoline Range Organics	ND	mg/L	0.125	EPA 8260B/C /5030A	1/31/23	1/31/23	
Diesel Range							
Diesel Range Organics	ND	mg/L	1.0	EPA 8015C/3510B	2/1/23	2/1/23	



Chemtech-Ford Laboratories

Serving the Intermountain West Since 1953

9632 South 500 West
Sandy, UT 84070
O:(801) 262-7299 F: (866) 792-0093
www.ChemtechFord.com



Certificate of Analysis

Rockwell Solutions, Inc
Dave Hansen
718 East Bridger Lane
Elk Ridge, UT 84651

PO#:
Receipt: 1/31/23 9:00 @ 0.6 °C
Date Reported: 2/6/2023
Project Name: Triple Stop Chevron

Sample ID: MW-41

Matrix: Water

Lab ID: 23A1970-26

Date Sampled: 1/30/23 14:15

Sampled By: David Hansen

	<u>Result</u>	<u>Units</u>	<u>Minimum Reporting Limit</u>	<u>Method</u>	<u>Preparation Date/Time</u>	<u>Analysis Date/Time</u>	<u>Flag(s)</u>
MBTEXn							
Benzene	ND	mg/L	0.005	EPA 8260D /5030A	1/31/23	1/31/23	
Ethylbenzene	ND	mg/L	0.012	EPA 8260D /5030A	1/31/23	1/31/23	
Methyl tert-Butyl Ether (MTBE)	ND	mg/L	0.005	EPA 8260D /5030A	1/31/23	1/31/23	
Naphthalene	ND	mg/L	0.012	EPA 8260D /5030A	1/31/23	1/31/23	
Toluene	ND	mg/L	0.012	EPA 8260D /5030A	1/31/23	1/31/23	
Xylenes, total	ND	mg/L	0.012	EPA 8260D /5030A	1/31/23	1/31/23	
Gasoline Range							
Gasoline Range Organics	ND	mg/L	0.125	EPA 8260B/C /5030A	1/31/23	1/31/23	
Diesel Range							
Diesel Range Organics	ND	mg/L	1.0	EPA 8015C/3510B	2/1/23	2/1/23	



Certificate of Analysis

Rockwell Solutions, Inc
Dave Hansen
718 East Bridger Lane
Elk Ridge, UT 84651

PO#:
Receipt: 1/31/23 9:00 @ 0.6 °C
Date Reported: 2/6/2023
Project Name: Triple Stop Chevron

Sample ID: MW-42

Matrix: Water

Lab ID: 23A1970-27

Date Sampled: 1/30/23 17:15

Sampled By: David Hansen

	<u>Result</u>	<u>Units</u>	<u>Minimum Reporting Limit</u>	<u>Method</u>	<u>Preparation Date/Time</u>	<u>Analysis Date/Time</u>	<u>Flag(s)</u>
MBTEXn							
Benzene	0.203	mg/L	0.005	EPA 8260D /5030A	1/31/23	1/31/23	
Ethylbenzene	0.027	mg/L	0.012	EPA 8260D /5030A	1/31/23	1/31/23	
Methyl tert-Butyl Ether (MTBE)	ND	mg/L	0.005	EPA 8260D /5030A	1/31/23	1/31/23	
Naphthalene	ND	mg/L	0.012	EPA 8260D /5030A	1/31/23	1/31/23	
Toluene	ND	mg/L	0.012	EPA 8260D /5030A	1/31/23	1/31/23	
Xylenes, total	0.029	mg/L	0.012	EPA 8260D /5030A	1/31/23	1/31/23	
Gasoline Range							
Gasoline Range Organics	0.259	mg/L	0.125	EPA 8260B/C /5030A	1/31/23	1/31/23	
Diesel Range							
Diesel Range Organics	ND	mg/L	1.0	EPA 8015C/3510B	2/1/23	2/1/23	



Chemtech-Ford Laboratories

Serving the Intermountain West Since 1953

9632 South 500 West
Sandy, UT 84070
O:(801) 262-7299 F: (866) 792-0093
www.ChemtechFord.com



Certificate of Analysis

Rockwell Solutions, Inc
Dave Hansen
718 East Bridger Lane
Elk Ridge, UT 84651

PO#:
Receipt: 1/31/23 9:00 @ 0.6 °C
Date Reported: 2/6/2023
Project Name: Triple Stop Chevron

Sample ID: MW-43

Matrix: Water

Lab ID: 23A1970-28

Date Sampled: 1/30/23 12:15

Sampled By: David Hansen

	<u>Result</u>	<u>Units</u>	<u>Minimum Reporting Limit</u>	<u>Method</u>	<u>Preparation Date/Time</u>	<u>Analysis Date/Time</u>	<u>Flag(s)</u>
MBTEXn							
Benzene	ND	mg/L	0.005	EPA 8260D /5030A	1/31/23	1/31/23	
Ethylbenzene	ND	mg/L	0.012	EPA 8260D /5030A	1/31/23	1/31/23	
Methyl tert-Butyl Ether (MTBE)	ND	mg/L	0.005	EPA 8260D /5030A	1/31/23	1/31/23	
Naphthalene	ND	mg/L	0.012	EPA 8260D /5030A	1/31/23	1/31/23	
Toluene	ND	mg/L	0.012	EPA 8260D /5030A	1/31/23	1/31/23	
Xylenes, total	ND	mg/L	0.012	EPA 8260D /5030A	1/31/23	1/31/23	
Gasoline Range							
Gasoline Range Organics	ND	mg/L	0.125	EPA 8260B/C /5030A	1/31/23	1/31/23	
Diesel Range							
Diesel Range Organics	ND	mg/L	1.0	EPA 8015C/3510B	2/1/23	2/1/23	



Certificate of Analysis

Rockwell Solutions, Inc
Dave Hansen
718 East Bridger Lane
Elk Ridge, UT 84651

PO#:
Receipt: 1/31/23 9:00 @ 0.6 °C
Date Reported: 2/6/2023
Project Name: Triple Stop Chevron

Sample ID: MW-44

Matrix: Water

Lab ID: 23A1970-29

Date Sampled: 1/30/23 13:45

Sampled By: David Hansen

	<u>Result</u>	<u>Units</u>	<u>Minimum Reporting Limit</u>	<u>Method</u>	<u>Preparation Date/Time</u>	<u>Analysis Date/Time</u>	<u>Flag(s)</u>
MBTEXn							
Benzene	0.976	mg/L	0.005	EPA 8260D /5030A	1/31/23	1/31/23	
Ethylbenzene	0.034	mg/L	0.012	EPA 8260D /5030A	1/31/23	1/31/23	
Methyl tert-Butyl Ether (MTBE)	ND	mg/L	0.005	EPA 8260D /5030A	1/31/23	1/31/23	
Naphthalene	ND	mg/L	0.012	EPA 8260D /5030A	1/31/23	1/31/23	
Toluene	0.014	mg/L	0.012	EPA 8260D /5030A	1/31/23	1/31/23	
Xylenes, total	0.097	mg/L	0.012	EPA 8260D /5030A	1/31/23	1/31/23	
Gasoline Range							
Gasoline Range Organics	1.12	mg/L	0.125	EPA 8260B/C /5030A	1/31/23	1/31/23	
Diesel Range							
Diesel Range Organics	ND	mg/L	1.0	EPA 8015C/3510B	2/1/23	2/1/23	



Chemtech-Ford Laboratories

Serving the Intermountain West Since 1953

9632 South 500 West
Sandy, UT 84070
O:(801) 262-7299 F: (866) 792-0093
www.ChemtechFord.com



Certificate of Analysis

Rockwell Solutions, Inc
Dave Hansen
718 East Bridger Lane
Elk Ridge, UT 84651

PO#:
Receipt: 1/31/23 9:00 @ 0.6 °C
Date Reported: 2/6/2023
Project Name: Triple Stop Chevron

Sample ID: MW-45

Matrix: Water

Lab ID: 23A1970-30

Date Sampled: 1/30/23 16:45

Sampled By: David Hansen

	<u>Result</u>	<u>Units</u>	<u>Minimum Reporting Limit</u>	<u>Method</u>	<u>Preparation Date/Time</u>	<u>Analysis Date/Time</u>	<u>Flag(s)</u>
MBTEXn							
Benzene	0.021	mg/L	0.005	EPA 8260D /5030A	1/31/23	1/31/23	
Ethylbenzene	0.060	mg/L	0.012	EPA 8260D /5030A	1/31/23	1/31/23	
Methyl tert-Butyl Ether (MTBE)	ND	mg/L	0.005	EPA 8260D /5030A	1/31/23	1/31/23	
Naphthalene	ND	mg/L	0.012	EPA 8260D /5030A	1/31/23	1/31/23	
Toluene	ND	mg/L	0.012	EPA 8260D /5030A	1/31/23	1/31/23	
Xylenes, total	0.026	mg/L	0.012	EPA 8260D /5030A	1/31/23	1/31/23	
Gasoline Range							
Gasoline Range Organics	0.848	mg/L	0.125	EPA 8260B/C /5030A	1/31/23	1/31/23	
Diesel Range							
Diesel Range Organics	ND	mg/L	1.0	EPA 8015C/3510B	2/1/23	2/1/23	



Chemtech-Ford Laboratories

Serving the Intermountain West Since 1953

9632 South 500 West
Sandy, UT 84070
O:(801) 262-7299 F: (866) 792-0093
www.ChemtechFord.com



Certificate of Analysis

Rockwell Solutions, Inc
Dave Hansen
718 East Bridger Lane
Elk Ridge, UT 84651

PO#:
Receipt: 1/31/23 9:00 @ 0.6 °C
Date Reported: 2/6/2023
Project Name: Triple Stop Chevron

Sample ID: EW-3

Matrix: Water

Lab ID: 23A1970-31

Date Sampled: 1/28/23 14:30

Sampled By: David Hansen

	<u>Result</u>	<u>Units</u>	<u>Minimum Reporting Limit</u>	<u>Method</u>	<u>Preparation Date/Time</u>	<u>Analysis Date/Time</u>	<u>Flag(s)</u>
MBTEXn							
Benzene	ND	mg/L	0.005	EPA 8260D /5030A	1/31/23	1/31/23	
Ethylbenzene	ND	mg/L	0.012	EPA 8260D /5030A	1/31/23	1/31/23	
Methyl tert-Butyl Ether (MTBE)	ND	mg/L	0.005	EPA 8260D /5030A	1/31/23	1/31/23	
Naphthalene	ND	mg/L	0.012	EPA 8260D /5030A	1/31/23	1/31/23	
Toluene	ND	mg/L	0.012	EPA 8260D /5030A	1/31/23	1/31/23	
Xylenes, total	0.028	mg/L	0.012	EPA 8260D /5030A	1/31/23	1/31/23	
Gasoline Range							
Gasoline Range Organics	ND	mg/L	0.125	EPA 8260B/C /5030A	1/31/23	1/31/23	
Diesel Range							
Diesel Range Organics	ND	mg/L	1.0	EPA 8015C/3510B	2/1/23	2/1/23	



Certificate of Analysis

Rockwell Solutions, Inc
Dave Hansen
718 East Bridger Lane
Elk Ridge, UT 84651

PO#:
Receipt: 1/31/23 9:00 @ 0.6 °C
Date Reported: 2/6/2023
Project Name: Triple Stop Chevron

Sample ID: EW-4

Matrix: Water

Lab ID: 23A1970-32

Date Sampled: 1/28/23 15:00

Sampled By: David Hansen

	<u>Result</u>	<u>Units</u>	<u>Minimum Reporting Limit</u>	<u>Method</u>	<u>Preparation Date/Time</u>	<u>Analysis Date/Time</u>	<u>Flag(s)</u>
MBTEXn							
Benzene	ND	mg/L	0.005	EPA 8260D /5030A	1/31/23	1/31/23	
Ethylbenzene	ND	mg/L	0.012	EPA 8260D /5030A	1/31/23	1/31/23	
Methyl tert-Butyl Ether (MTBE)	ND	mg/L	0.005	EPA 8260D /5030A	1/31/23	1/31/23	
Naphthalene	ND	mg/L	0.012	EPA 8260D /5030A	1/31/23	1/31/23	
Toluene	ND	mg/L	0.012	EPA 8260D /5030A	1/31/23	1/31/23	
Xylenes, total	ND	mg/L	0.012	EPA 8260D /5030A	1/31/23	1/31/23	
Gasoline Range							
Gasoline Range Organics	0.298	mg/L	0.125	EPA 8260B/C /5030A	1/31/23	1/31/23	
Diesel Range							
Diesel Range Organics	ND	mg/L	1.0	EPA 8015C/3510B	2/1/23	2/1/23	



Chemtech-Ford Laboratories

Serving the Intermountain West Since 1953

9632 South 500 West
Sandy, UT 84070
O:(801) 262-7299 F: (866) 792-0093
www.ChemtechFord.com



Certificate of Analysis

Rockwell Solutions, Inc
Dave Hansen
718 East Bridger Lane
Elk Ridge, UT 84651

PO#:
Receipt: 1/31/23 9:00 @ 0.6 °C
Date Reported: 2/6/2023
Project Name: Triple Stop Chevron

Report Footnotes

Abbreviations

ND = Not detected at the corresponding Minimum Reporting Limit (MRL).

1 mg/L = one milligram per liter or 1 mg/kg = one milligram per kilogram = 1 part per million.

1 ug/L = one microgram per liter or 1 ug/kg = one microgram per kilogram = 1 part per billion.

1 ng/L = one nanogram per liter or 1 ng/kg = one nanogram per kilogram = 1 part per trillion.

